

# Logosol Multifunctional Servo Drive LS-231g3SB

Doc # 712231005 / Rev. C, 09/13/2018

## Features

- ❑ **Controller modes:**
  - LDCN
  - Analog  $\pm 10V$
  - Quadrature Encoder mode
  - Step & Direction
  - Step Positive/Step Negative
- ❑ **Dual Encoder Loop**
- ❑ **Servo loop rate 51.2uS**
- ❑ **Sinusoidal motor phases commutation**
- ❑ **Motors supported:**
  - Panasonic A and S series motors
  - Motors with Serial Absolute encoders
  - Brushless 60/120° commutated
  - Linear motors
  - Voice coil and Brush motors
- ❑ **Up to 20A peak / 12A continuous output current**
- ❑ **Up to 200V DC power supply**
- ❑ **Path point buffer for coordinated motion control**
- ❑ **32-bit position, velocity, acceleration, 16-bit PID filter gain values**
- ❑ **Torque loop**
- ❑ **Safety Bus**
- ❑ **Feedback loss protection**
- ❑ **Comprehensive motor output short-circuit protection:**
  - Output to output
  - Output to ground
- ❑ **Adjustable motor current and overload time limits**
- ❑ **Over/under voltage shutdown**
- ❑ **Overheating protection**
- ❑ **Forward and reverse over travel inputs**
- ❑ **Communication 19.2Kb/S to 1.25Mb/S**
- ❑ **PWM frequency 20 kHz**
- ❑ **Encoder rate 10.0MHz**



## Description

LS-231g3SB is all digital multifunctional single-axis servo controller with integrated power amplifier designed for applications requiring sinusoidal control of Rotary or Linear brushless motors up to 1.5 HP. DC (brush) and Voice coil motors are also supported. In *LDCN* mode the LS-231g3SB supports coordinated motion of several motors. Up to 31 devices can be controlled over a multi-drop full duplex RS-485 network. Standard RJ-45 connectors and commercially available cables are used for daisy chaining of the modules.

In *Analog* modes the drive supports precise speed control. *Analog* modes give flexible use of Analog, Enable and Direction inputs.

Three modes are provided in addition to the standard *Step & Direction* mode. In *Step Positive/Step Negative* mode the direction is controlled via two separate step inputs. In *Quadrature encoder* modes step and direction inputs can be connected to A and B phase of an incremental encoder.

Dual-Loop encoder mode supports two encoder inputs. In this mode the encoders for position and servo control are separated. High resolution encoders can be used for precise position control.

LS-231g3SB is equipped with various safety features such as short circuit protection for the motor and the drive, limit switch inputs, over/under voltage shutdown and encoder presence control. Safety bus can be connected for multi-drive system protection. Maximum motor output current and overload time can be set.

# Logosol Multifunctional Servo Drive LS-231g3SB

Doc # 712231005 / Rev. C, 09/13/2018

## TECHNICAL SPECIFICATIONS rated at 25°C ambient, POWER (+)=60VDC, Load=250μH motor

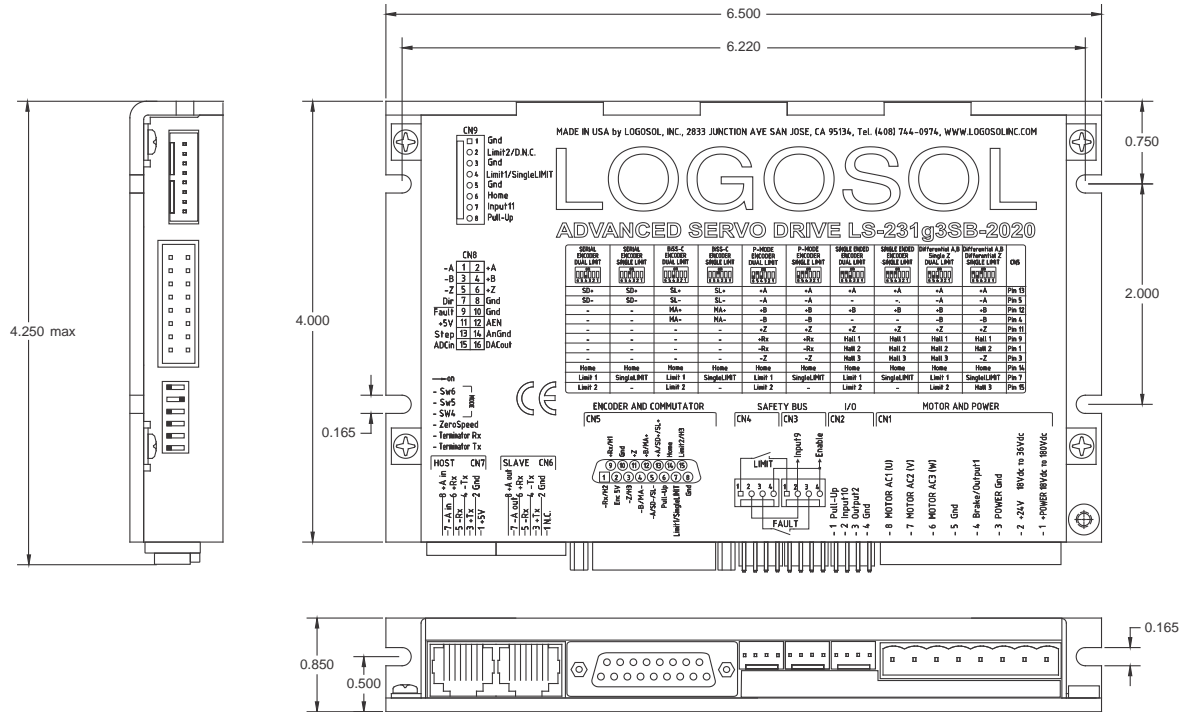
+POWER	18Vdc to 180Vdc, 200V Absolute Maximum
+24V	18Vdc to 36Vdc I/O power supply
+24V Backup Current	0.25A Maximum
MAX MOTOR OUTPUT CURRENT Peak Continuous	20A 12A
MIN LOAD INDUCTANCE	200μH
PWM SWITCHING FREQUENCY	19.5KHz
SERVO RATE	51.2 μSec
SERIAL BAUD RATE	19.2Kb/Sec to 1.25 Mb/Sec
DIGITAL OUTPUTS Source driver Brake/Output1 (CN1pin4) Pull-Up (CN2pin1, CN5pin6, CN9pin8) Output2 (CN2pin3) TTL Fault (CN8pin9)	24V (18Vdc to 36Vdc Maximum). Short protection. Output clamp diode. 0.3A 0.1A for all outputs combined 0.2A Hlmin=4V, LOmax=0.4V Iout=4mA
RELAY OUTPUTS LIMIT, FAULT	Relay contact
ANALOG OUTPUT DACout	0 to +2.5V/1mA
DIGITAL INPUTS +A, -A, +B, -B, +Z, -Z/H3, +Rx/H1, -Rx/H2, H3 Limit1, Limit2, Home, Input9, Enable, Input10, Input11 Dir, AEN, Step (CN8pin7, pin12, pin13)	HI=3.5V, LO=1.5V, 2K2 pull-up resistors LOmin=-0.5V<LO< 6.5V; 15V<HI<Hlmax=36V;Imax=8mA HI=3.5V, LO=1.5V, 4K7 pull-down resistors
ANALOG INPUT ADCin	±10V, 10K to Gnd
ENCODER*	Quadrature with index. Encoder rate 10MHz max (5MHz max Enc Filter=ON) Panasonic encoder mode. Serial Absolute and encoder. BiSS-C encoder
HALL SENSORS	60/120°, Panasonic, Serial absolute encoders
LEDs ORANGE, GREEN, RED	Refer to LS-231g3SB Diagnostic and I/O section for details
PROTECTION Short circuit Over-temperature shut off	Motor output to motor output, Motor output to GND Activated at 80°C
POWER DESSIPATION (max)	45W
THERMAL REQUIREMENTS Storage temperature range Operating temperature range	-30 to +85 °C 0 to 45 °C
MECHANICAL Size Weight	6.5" x 4.0" x 0.85" 0.8 lb. (0.36 kg)
+5V SOURCE Max output current	200mA for all output pins combined
MATING CONNECTORS MOTOR AND POWER I/O SAFETY BUS CN9 ENCODER AND COMUTATOR CN8 NETWORK (HOST, SLAVE)	RECOMMENDED CONNECTOR TYPE EM2565-08-H Terminal Block 8 Poles 5.08mm Molex 22-01-3047 housing with 08-50-0114 pins (4 pcs.) Molex 22-01-3047 housing (2 pcs.) with 08-50-0114 pins (8 pcs.) Molex 22-01-3087 housing with 08-50-0114 pins (8 pcs.) AMP 205206-3 D-Shape 15 Pin M Crimp Housing with AMP 5-66507-7(15 pcs.) 3M 34526600 Socket16 pin, polarized 0.1" 8 pin RJ-45

**Note:** Contact Logosol for details regarding the Serial Absolute encoders supported

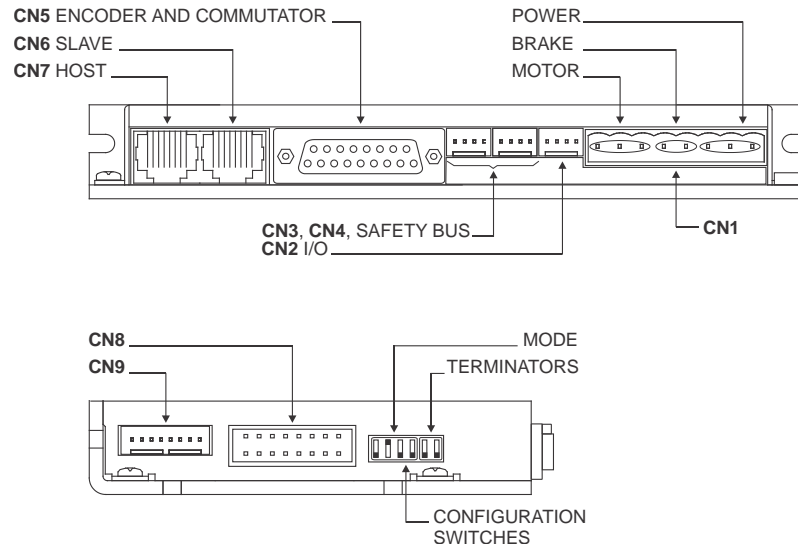
# Logosol Multifunctional Servo Drive LS-231g3SB

Doc # 712231005 / Rev. C, 09/13/2018

## DIMENSIONAL DRAWING



## SERVO DRIVE LAYOUT



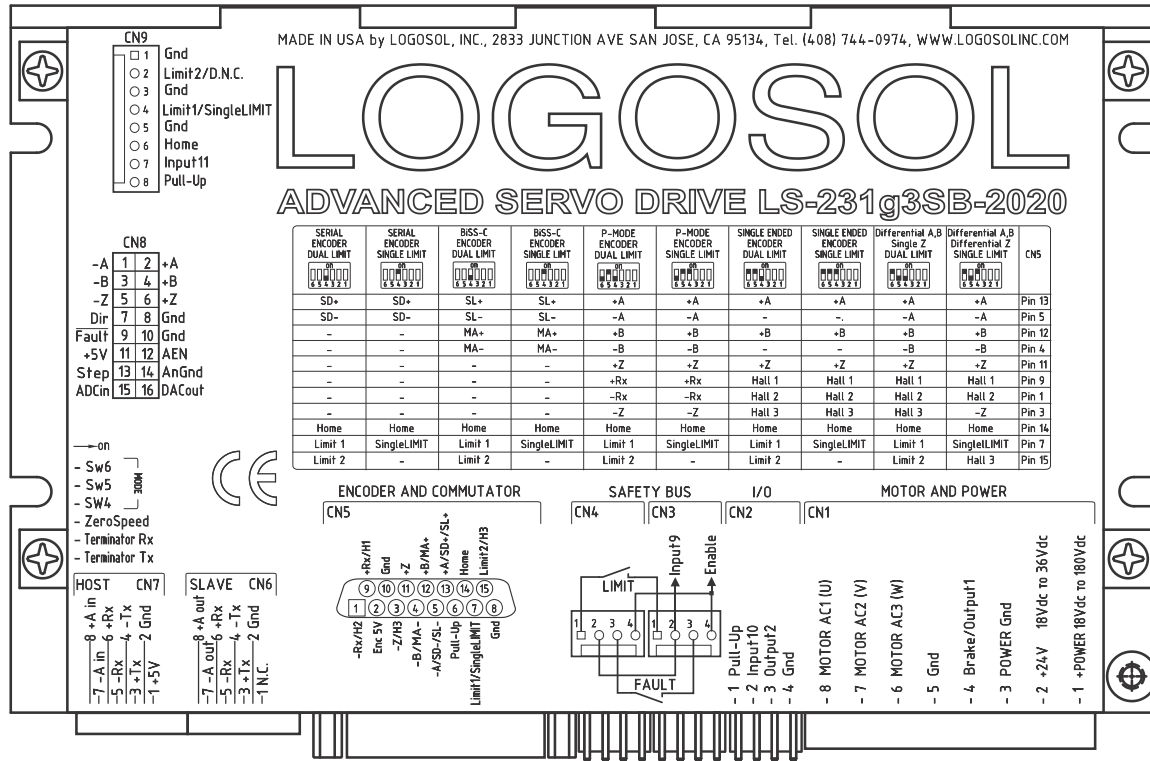
## ORDERING GUIDE

PART NUMBER	MODEL	DESCRIPTION
9122310174	LS-231g3SB-2020	Multifunctional servo drive 20A/180V
230601051	LS-231-CN	Mating connector kit for LS-231
230601017	PAN-AS-CN	Mating connector kit for Panasonic A and S series motors
230601027	PAN-ASB-CN	Mating connector kit for Panasonic A and S series motors with brake
230601076	PAN-ASA-CN	Mating Connector Kit for Panasonic motors with absolute encoder
230601077	PAN-ASBA-CN	Mating Connector Kit for Panasonic motors with absolute encoder and brake
922231100	LS-2311	Dual-loop master encoder interface

# Logosol Multifunctional Servo Drive LS-231g3SB

Doc # 712231005 / Rev. C, 09/13/2018

## CONECTORS AND PINOUT



## DIP SWITCHES

SW	NAME	DESCRIPTION
1	Terminator Tx	Transmit line terminator
2	Terminator Rx	Receive line terminator
3	ZeroSpeed	OFF – LIMIT relay is open when Limit1 or Limit2 is open, if not bridged ON – LIMIT relay is open when the motor is moving
4	Sw4	OFF – Limit1 and Limit2 inputs. Non-differential index (+Z) for brushless or DC motors with differential encoders ON – SingleLIMIT. Differential index (+Z, -Z) for brushless or DC motors with differential encoders
5	Sw5	Sw6=ON, Sw5=ON - Motor with single ended (non-differential) encoder Sw6=ON, Sw5=OFF - Motor with differential encoder
6	Sw6	Sw6=OFF, Sw5=ON - Panasonic A or S series motor (P-mode) Sw6=OFF, Sw5=OFF - Reserved

# Logosol Multifunctional Servo Drive LS-231g3SB

Doc # 712231005 / Rev. C, 09/13/2018

## CONNECTORS

### CN1 – POWER AND MOTOR

PIN	SIGNAL	DESCRIPTION
1	+POWER 18Vdc to 180Vdc	Power supply positive terminal
2	+24V 18Vdc to 36Vdc	I/O power supply
3	POWER Gnd	Power supply ground
4	Brake/Output1	Brake output
5	Gnd	I/O ground
6	MOTOR AC3 (W)	Output to motor Phase 3 terminal for brushless motors Phase W for Panasonic A and S or MSMD motors Negative terminal for DC and Voice Coil motors
7	MOTOR AC2 (V)	Output to motor Phase 2 terminal for brushless motors Phase V for Panasonic A and S or MSMD motors Positive terminal for DC and Voice Coil motors
8	MOTOR AC1 (U)	Output to motor Phase 1 terminal for brushless motors Phase U for Panasonic A and S or MSMD motors Not connected for DC and Voice Coil motors

### CN2 – I/O

PIN	SIGNAL	DESCRIPTION
1	Gnd	Signal ground
2	Output2	Multifunctional output (mode dependent)
3	Input10	Multifunctional input (mode dependent)
4	Pull-Up	Protected power output (+24V)

## SAFETY BUS

### CN3

PIN	SIGNAL	DESCRIPTION
1	LIMIT	Limit relay contact (CN3). See note below
2	Input9	Limit input
3	FAULT	Fault relay contact (CN3)
4	Enable	Drive Enable/Stop input

### CN4

PIN	SIGNAL	DESCRIPTION
1	LIMIT	Limit relay contact (CN4). See note below
2	Input9	Limit input
3	FAULT	Fault relay contact (CN4)
4	Enable	Drive Enable/Stop input

#### Note:

##### SW3=OFF:

- SW4=OFF – LIMIT relay is open when Limit 1 or Limit 2 is open (CN5pin7 and CN9pin4 or CN5pin15 and CN9pin2), if not bridged.
- SW4=ON – LIMIT relay is open when SingleLIMIT is open (CN5pin7 and CN9pin4), if not bridged;

##### SW3=ON:

- LIMIT relay is closed only when motor is not moving.

# Logosol Multifunctional Servo Drive LS-231g3SB

Doc # 712231005 / Rev. C, 09/13/2018

## CN5 – ENCODER AND COMMUTATOR

### 1. Serial Absolute encoders, and P-mode

PIN	Serial Absolute Encoder	BiSS-C Encoder	P-Mode encoder	DESCRIPTION
1	-	-	-Rx	Hall data for Panasonic A or S series motors Not applicable for Serial and BiSS-C encoders
2	Enc 5V			Encoder +5V power supply
3	-	-	-Z	Encoder index (-)Z for Panasonic A or S series motors Not applicable for Serial and BiSS-C encoders
4	-	MA-	-B	Encoder phase (-)B for Panasonic A or S series motors Not applicable for Serial Encoders MA- for BiSS-C Encoders
5	SD-	SL-	-A	Encoder phase (-)A for Panasonic A or S series motors SD- for Serial Encoders SL- for BiSS-C Encoders
6	Pull-Up			Protected power output (+24V)
7	Limit1 / SingleLIMIT			<b>SW4=OFF:</b> Limit1 input (connected to CN9-4 through 2K2 resistor) <b>SW4=ON:</b> SingleLIMIT input (connected to CN9-4 through 2K2 resistor)
8	Gnd			Signal ground
9	-	-	+Rx	Hall data for Panasonic A or S series motors Not applicable for Serial and BiSS-C encoders
10	Gnd			Encoder ground
11	-	-	+Z	Encoder index (+)Z for Panasonic A or S series motors Not applicable for Serial and BiSS-C encoders
12	-	MA+	+B	Encoder phase (+)B for Panasonic A or S series motors Not applicable for Serial Encoders MA+ for BiSS-C Encoders
13	SD+	SL+	+A	Encoder phase (+)A for Panasonic A or S series motors SD+ for Serial Encoders SL+ for BiSS-C Encoders
14	Home			Home input (connected to CN9-6 through 2K2 resistor)
15	Limit2 / -	Limit2 / -	Limit2 / -	<b>SW4=OFF:</b> Limit2 input (connected to CN9-2 through 2K2 resistor) <b>SW4=ON:</b> Do not connect

**Note:** (-) = DO NOT CONNECT.

# Logosol Multifunctional Servo Drive LS-231g3SB

Doc # 712231005 / Rev. C, 09/13/2018

## CN5 – ENCODER AND COMMUTATOR

### 2. Brushless and DC brush motors

PIN	Differential encoder	Single ended encoder	DESCRIPTION
1	H2 / -	H2 / -	Hall input #2 for brushless motors Not applicable for DC motors
2	Enc 5V		Encoder +5V power supply
3	H3 / -	H3 / -	<b>SW4=OFF:</b> Hall input #3 for brushless motors Not applicable for DC motors <b>SW4=ON:</b> (-)Z for motors with quadrature differential encoders
4	-B	-	Encoder phase (-)B for motors with quadrature differential encoder Not applicable for motors with single ended encoders
5	-A	-	Encoder phase (-)A for motors with quadrature differential encoder Not applicable for motors with single ended encoders
6	Pull-Up		Protected power output (+24V)
7	Limit1 / SingleLIMIT		<b>SW4=OFF:</b> Limit1 input (connected to CN9-4 through 2K2 resistor) <b>SW4=ON:</b> SingleLIMIT input (connected to CN9-4 through 2K2 resistor)
8	Gnd		Signal ground
9	H1 / -	H1 / -	Hall input #1 for brushless motors Not applicable for DC motors
10	Gnd		Encoder ground
11	+Z	+Z	Encoder index (+)Z
12	+B	+B	Encoder phase (+)B
13	+A	+A	Encoder phase (+)A
14	Home		Home input (connected to CN9-6 through 2K2 resistor)
15	Limit2 / H3	Limit2 / H3	<b>SW4=OFF:</b> Limit2 input (connected to CN9-2 through 2K2 resistor) <b>SW4=ON:</b> Hall Input #3 for brushless motors Not applicable for DC motors

**Note:** (-) = DO NOT CONNECT.

## CN6 –SLAVE

PIN	SIGNAL	DESCRIPTION
1	N.C.	Not connected
2	Gnd	Interface ground
3	+Tx	(+) Transmit data
4	-Tx	(-) Transmit data
5	-Rx	(-) Receive data
6	+Rx	(+) Receive data
7	-A out	(-) Address output
8	+A out	(+) Address output

## CN7 –HOST

PIN	SIGNAL	DESCRIPTION
1	+5V	RS-232 adapter power supply
2	Gnd	Interface ground
3	+Tx	(+) Transmit data
4	-Tx	(-) Transmit data
5	-Rx	(-) Receive data
6	+Rx	(+) Receive data
7	-A in	(-) Address input
8	+A in	(+) Address input

# Logosol Multifunctional Servo Drive LS-231g3SB

Doc # 712231005 / Rev. C, 09/13/2018

## CN8

PIN	SIGNAL	DESCRIPTION
1	-A	Encoder phase (-) A output. Wired to CN5pin5
2	+A	Encoder phase A output. Wired to CN5pin13
3	-B	Encoder phase (-) B output. Wired to CN5pin4
4	+B	Encoder phase B output. Wired to CN5pin12
5	-Z	Encoder phase (-) Z output
6	+Z	Encoder phase Z output. Wired to CN5pin11
7	Dir	LDCN Single and Dual-loop modes – NA Analog input Single/Dual-loop mode – NA Analog input mode with direction invert input – Direction input Enable Positive/Enable Negative Analog input mode – Enable + Direction input Step & Direction mode – Direction input Step Positive/Step Negative mode – Negative Step input Quadrature encoder mode – Counter A input
8	Gnd	Signal ground
9	Fault	Fault output
10	Gnd	Signal ground
11	+5V	+5V power supply
12	AEN	LDCN Single loop mode – NA LDCN Dual-loop mode – Master encoder error All other modes – Enable input
13	Step	LDCN Single and Dual-loop modes – NA All Analog modes – NA Step & Direction mode – Step input Step Positive/Step Negative mode – Positive Step input Quadrature encoder modes – Counter B input
14	AnGnd	Analog ground
15	ADCin	Analog input 0 to $\pm 10V$
16	DACout	Analog output 0 to +2.5V

## CN9

PIN	SIGNAL	DESCRIPTION
1	Gnd	Signal ground
2	Limit2 / D.N.C.	<b>SW4=OFF:</b> Limit2 (connected to CN5-15 through 2K2 resistor) <b>SW4=ON:</b> DO NOT CONNECT!
3	Gnd	Signal ground
4	Limit1 / SingleLIMIT	<b>SW4=OFF:</b> Limit1 (connected to CN5-7 through 2K2 resistor) <b>SW4=ON:</b> SingleLIMIT (connected to CN5-7 through 2K2 resistor)
5	Gnd	Signal ground
6	Home	Home (connected to CN5-14 through 2K2 resistor)
7	Input11	Multifunctional input (mode dependent)
8	Pull-Up	Protected power output (+24V)



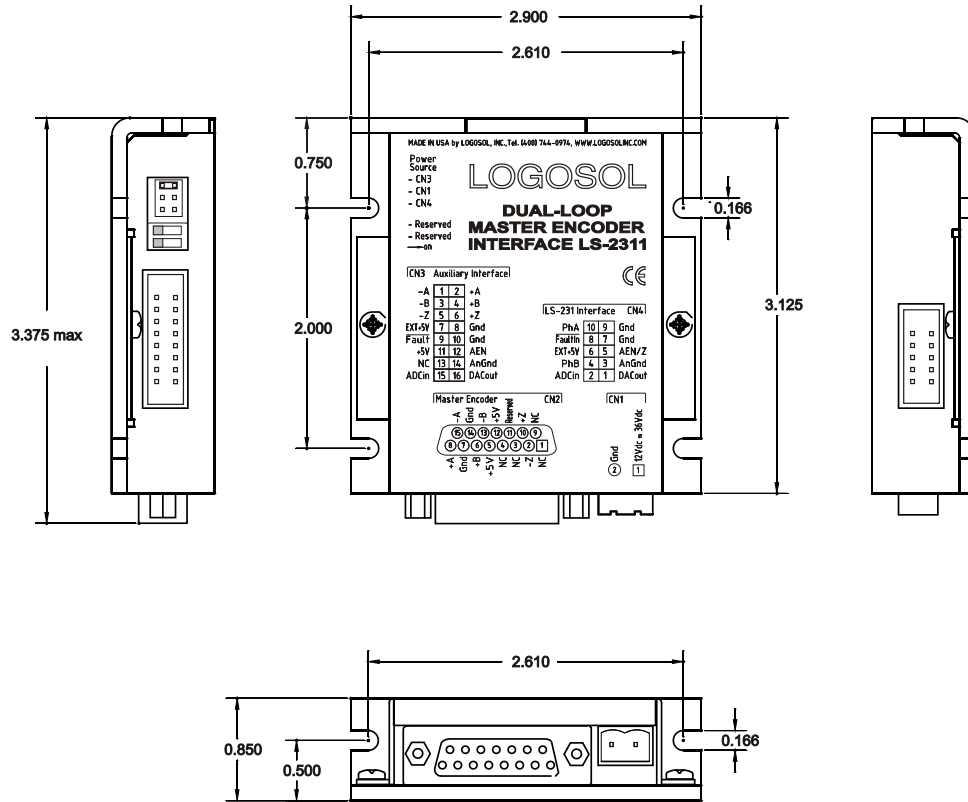
# Logosol Multifunctional Servo Drive LS-231g3SB

Doc # 712231005 / Rev. C, 09/13/2018

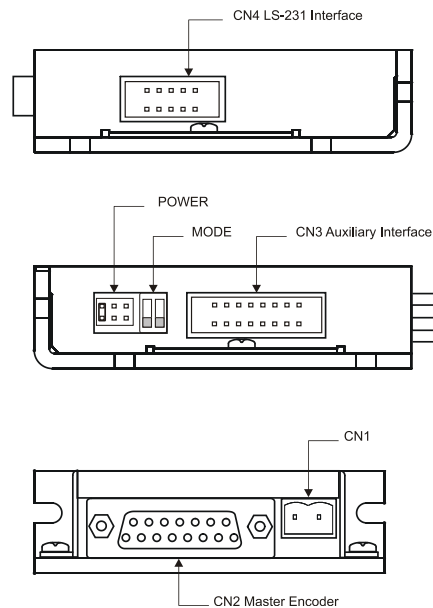
## DUAL-LOOP MASTER ENCODER INTEFRACE

LS-2311 is master encoder interface for dual-loop applications with LS-231g3SB Multifunctional Servo Drive.

## DUAL-LOOP MASTER ENCDOER INTERFACE DIMENSIONAL DRAWING



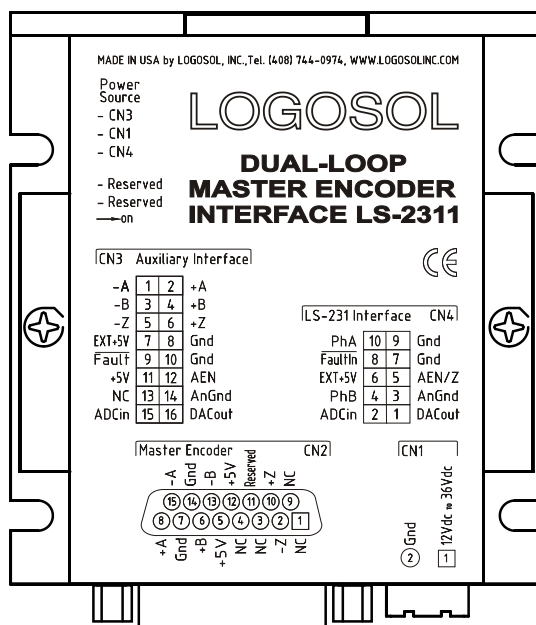
## DUAL-LOOP MASTER ENCODER INTERFACE LAYOUT



# Logosol Multifunctional Servo Drive LS-231g3SB

Doc # 712231005 / Rev. C, 09/13/2018

## DUAL-LOOP MASTER ENCODER INTERFACE LS-2311 CONECTORS AND PINOUT



### JUMPERS

JUMPER	NAME	DESCRIPTION
1	CN4	EXT +5V Power supply from CN4pin11
2	CN1	Internal power supply. 12Vdc to 36Vdc power supply from CN1pin1
3	CN3	EXT +5V Power supply from CN3pin7

Note: Only one JUMPER must be shorted.

### DIP SWITCHES

SWITCH	NAME	DESCRIPTION
1	Reserved	Reserved must be OFF
2	Reserved	Reserved must be OFF

### CN1

PIN	SIGNAL	DESCRIPTION
1	12Vdc to 36Vdc	Power supply input, if Power Source CN1 jumper is installed
2	Gnd	Power supply ground

### CN2 – Master Encoder

PIN	SIGNAL	DESCRIPTION
1	NC	Not connected
2	-Z	Encoder phase -Z
3	NC	Not connected
4	NC	Not connected
5	+5V	Encoder power supply
6	+B	Encoder phase +B
7	Gnd	Power supply ground
8	+A	Encoder phase +A
9	NC	Not connected
10	+Z	Encoder phase +Z
11	Reserved	Reserved - DO NOT CONNECT
12	+5V	Encoder power supply
13	-B	Encoder phase -B
14	Gnd	Power supply ground
15	-A	Encoder phase -A

# Logosol Multifunctional Servo Drive LS-231g3SB

Doc # 712231005 / Rev. C, 09/13/2018

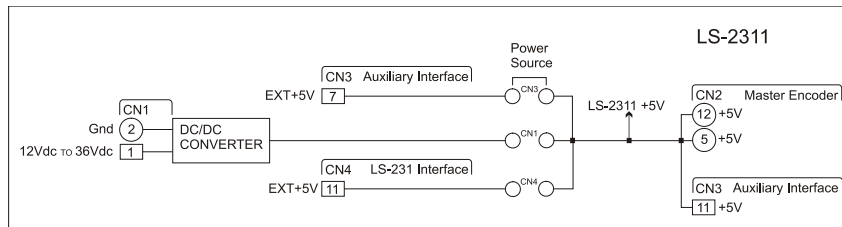
## CN3 – Auxiliary Interface

PIN	SIGNAL	DESCRIPTION
1	-A	Encoder phase –A. Wired to CN2pin15
2	+A	Encoder phase +A. Wired to CN2pin8
3	-B	Encoder phase –B. Wired to CN2pin13
4	+B	Encoder phase +B. Wired to CN2pin6
5	-Z	Encoder phase –Z. Wired to CN2pin2
6	+Z	Encoder phase +Z. Wired to CN2pin10
7	EXT +5V	+5V power supply input, if Power Source CN3 jumper is installed
8	Gnd	Power supply ground
9	Fault	Fault output.
10	Gnd	Power supply ground
11	+5V	+5V Power Supply output
12	AEN	Amplifier Enable input
13	NC	Not connected
14	AnGnd	Analog ground. Wired to CN4pin14
15	ADCin	Analog input. Wired to CN4pin15
16	DACout	Analog output. Wired to CN4pin16

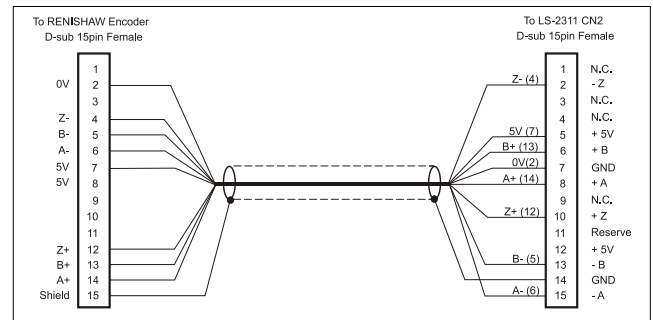
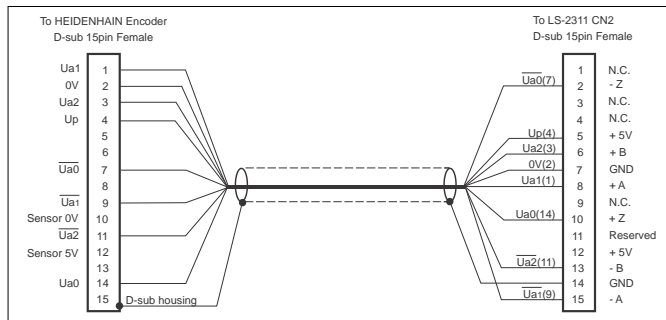
## CN4 – LS-231g3SB interface

PIN	SIGNAL	DESCRIPTION
1	DACout	Analog output. Wired to CN3pin16
2	ADCin	Analog input. Wired to CN3pin15
3	AnGnd	Analog ground. Wired to CN3pin14
4	PhB	Master encoder phase B output to LS-231g3SB
5	AEN/Z	Amplifier Enable output
6	EXT +5V	+5V input power input, if Power Source CN4 jumper is installed
7	Gnd	Power supply ground
8	Fault In	Fault input from LS-231g3SB
9	Gnd	Power supply ground
10	PhA	Master encoder phase A output to LS-231g3SB

## LS-2311 Power Supply Source



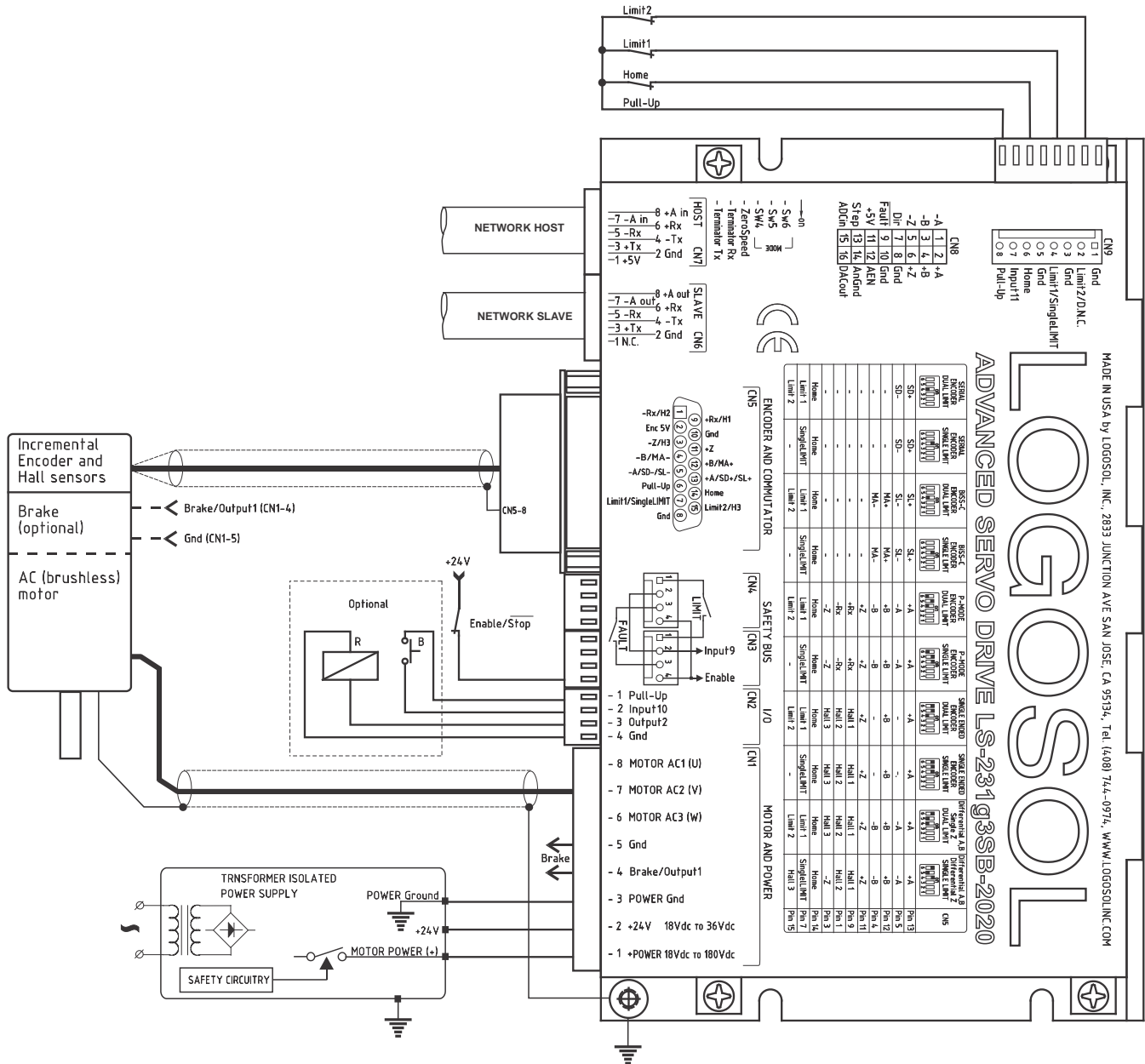
## LS-231g3SB Master Encoder Cables



# Logosol Multifunctional Servo Drive LS-231g3SB

Doc # 712231005 / Rev. C, 09/13/2018

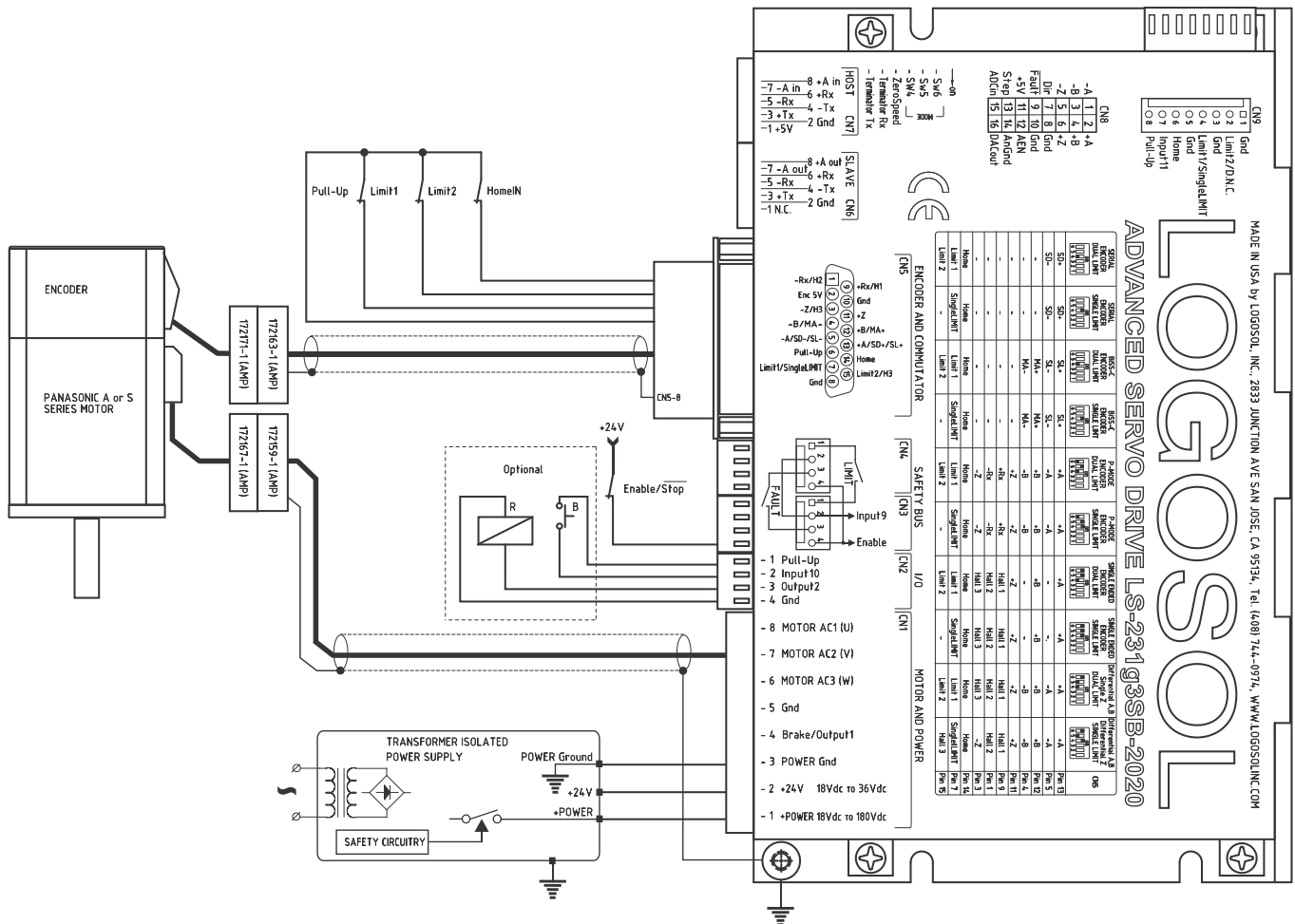
**SAMPLE APPLICATION** using AC (brushless) motor in **LDCN mode**  
Home switch and limit switches are connected to CN9.



# Logosol Multifunctional Servo Drive LS-231g3SB

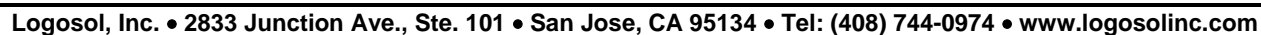
Doc # 712231005 / Rev. C, 09/13/2018

**SAMPLE APPLICATION** using Panasonic A or S series motor in **LDCN mode**  
Home switch and limit switches are connected to CN5.



## Doc # 712231005 / Rev. C, 09/13/2018

ANALOG INPUT SINGLE LOOP MODE		
AEN (CN8pin12)	Dir (CN8pin7)	
Low (open)	X	Amplifier disabled, fault cleared
High	X	Amplifier enabled
ANALOG INPUT MODE WITH DIRECTION INVERT INPUT		
AEN (CN8pin12)	Dir (CN8pin7)	
Low (open)	X	Amplifier disabled, fault cleared
High	Low (open)	Amplifier enabled
High	High	Amplifier enabled ADCin inverted
ENABLE POSITIVE/ENABLE NEGATIVE ANALOG INPUT MODE		
AEN (CN8pin12)	Dir (CN8pin7)	
Low (open)	Low (open)	Amplifier disabled, fault cleared
High	High	
Low (open)	High	Amplifier enabled, ADCin inverted
High	Low (open)	Amplifier enabled

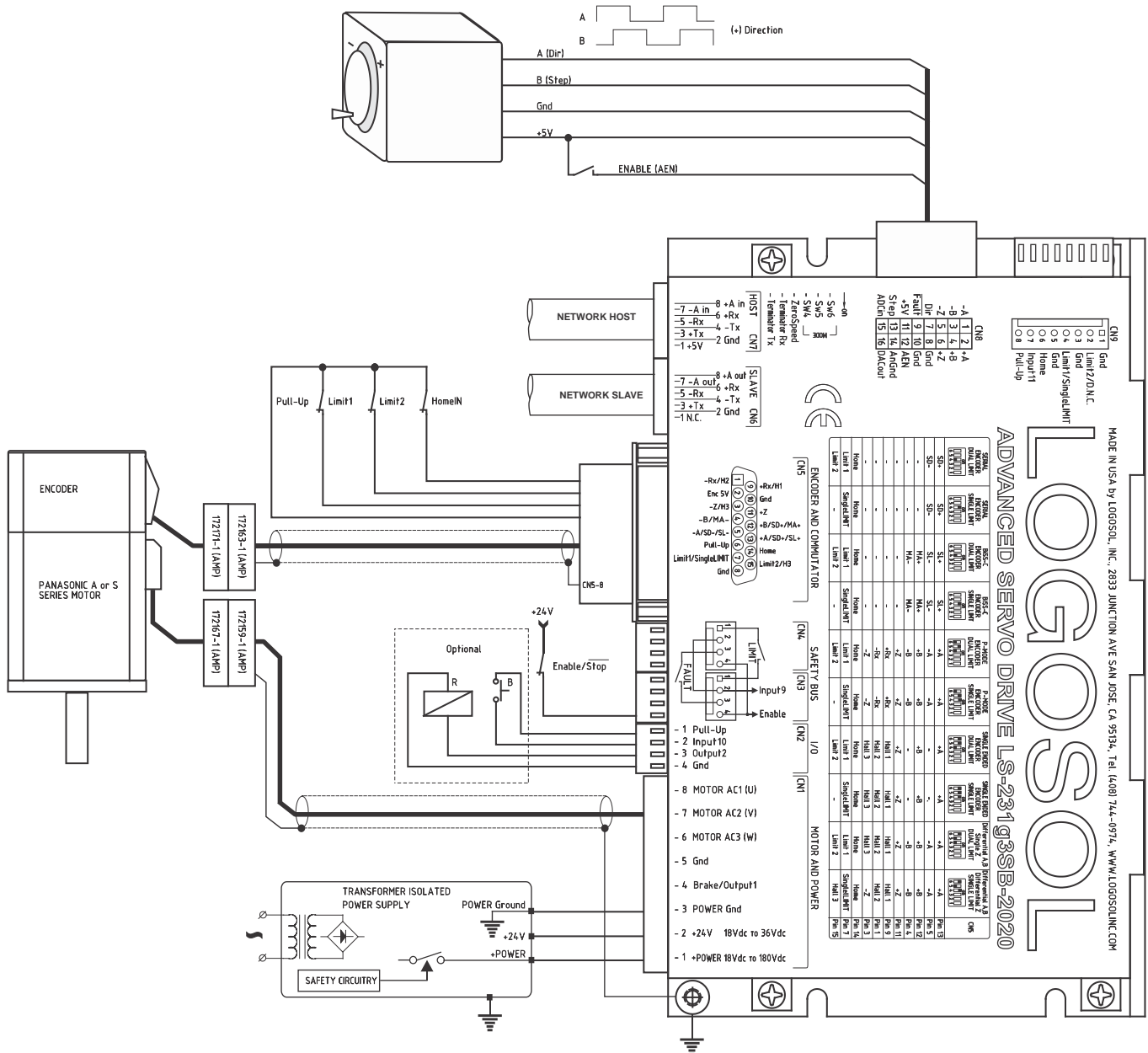


## Doc # 712231005 / Rev. C, 09/13/2018

# Logosol Multifunctional Servo Drive LS-231g3SB

Doc # 712231005 / Rev. C, 09/13/2018

## SAMPLE APPLICATION using Panasonic A or S series motors in *Quadrature encoder mode*



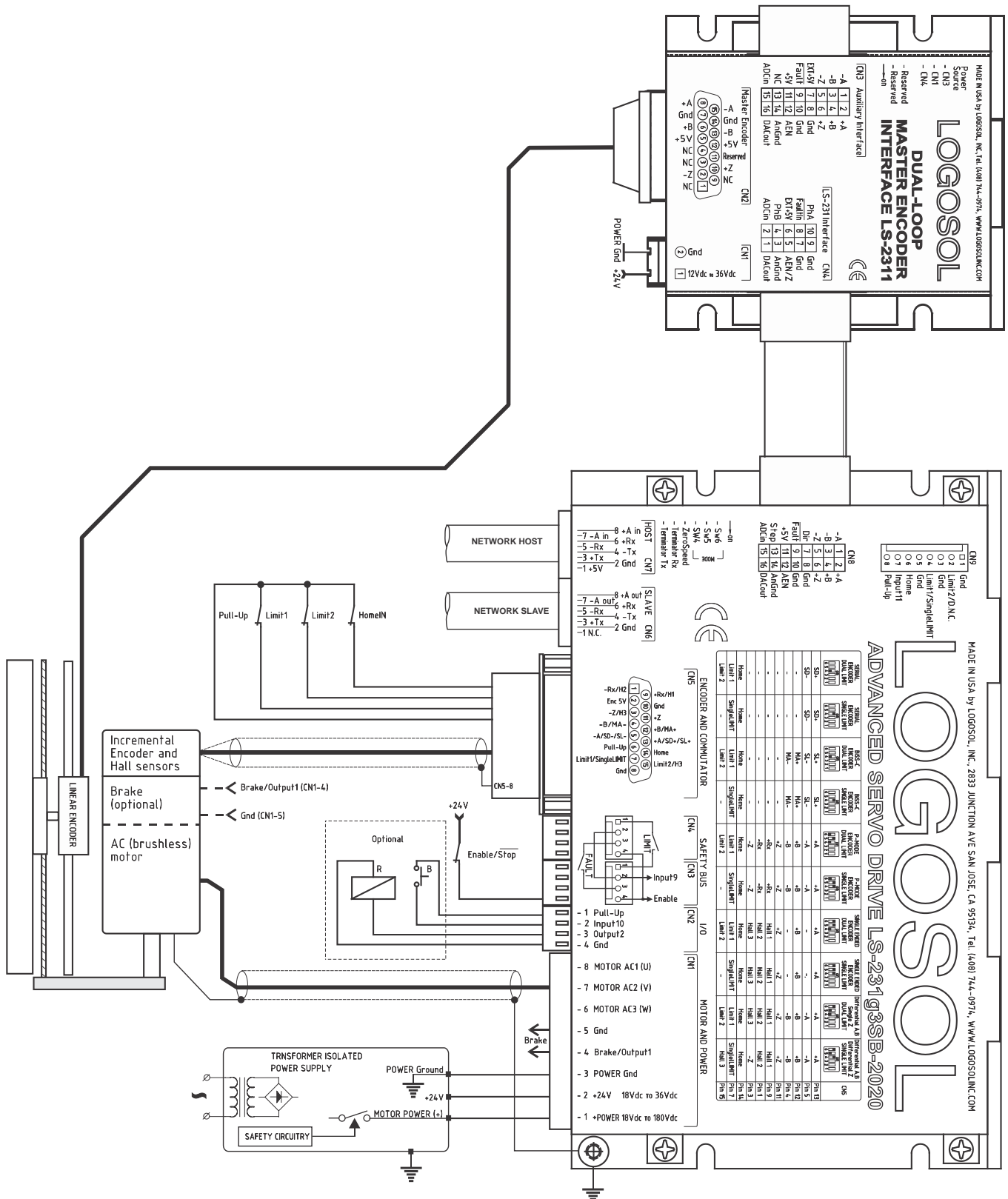


# Logosol Multifunctional Servo Drive LS-231g3SB

Doc # 712231005 / Rev. C, 09/13/2018

## SAMPLE APPLICATION LDCN Dual-Loop mode using AC (brushless) motor

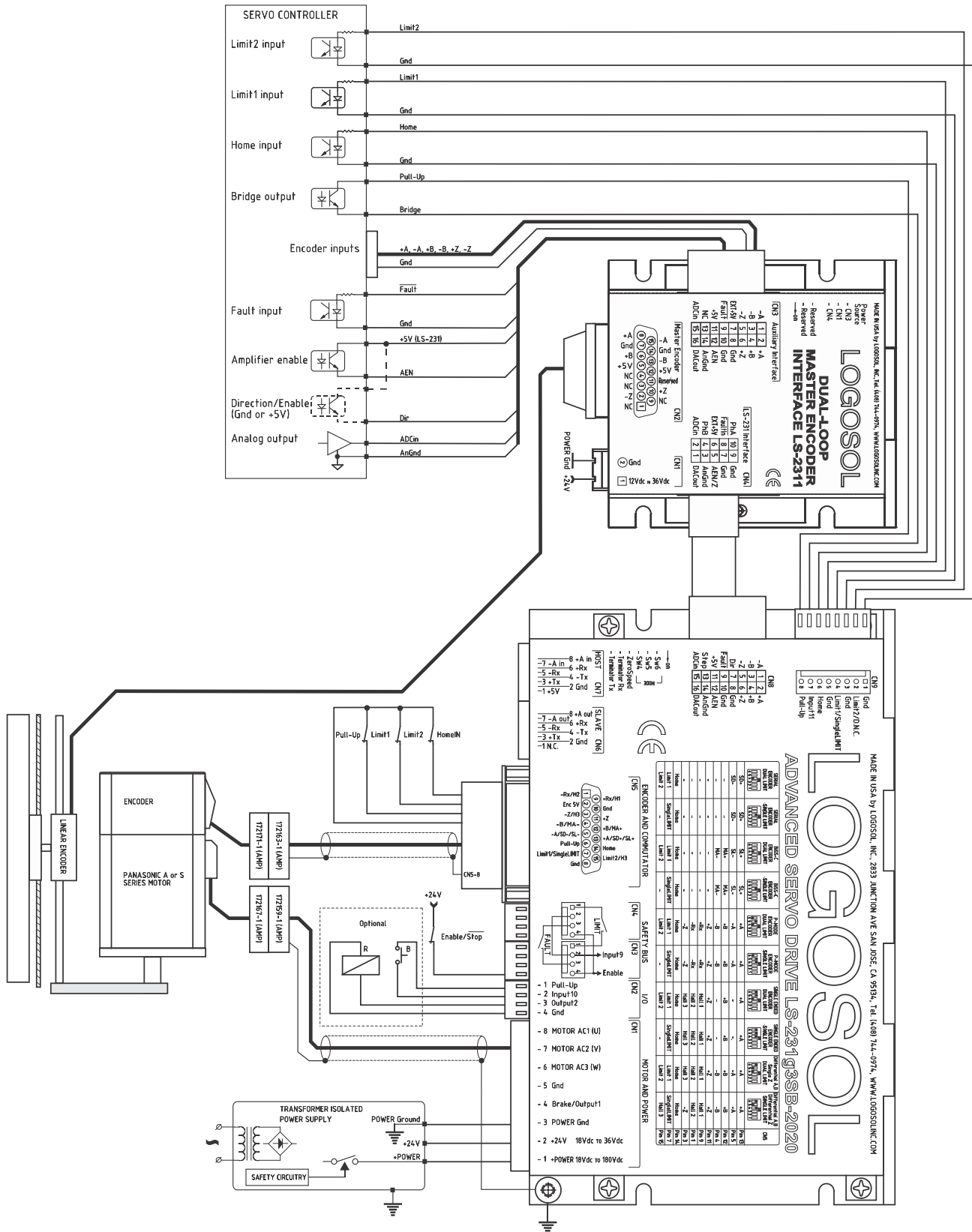
Home switch and limit switches are connected to CN5.



# Logosol Multifunctional Servo Drive LS-231g3SB

Doc # 712231005 / Rev. C, 09/13/2018

## SAMPLE APPLICATION Analog Input Dual-Loop mode using Panasonic A or S series motors



## Doc # 712231005 / Rev. C, 09/13/2018

## Doc # 712231005 / Rev. C, 09/13/2018

The diagram illustrates the electrical connections between two LOGOSOL Advanced Servo Drives (LS-231Q3SB-2) configured in Master-Slave mode. It includes a Servo Controller and a Motor.

### Servo Controller Connections

- CNS 2 +A:** Connect to Encoder A
- CNS 6 -Z:** Connect to Encoder B
- CNS 9 -Z:** Connect to Amplifier Enable
- CNS 12 AEN:** Connect to Analog Output
- CNS 13 AOCN:** Connect to Fault
- CNS 8 GND:** Connect to Ground
- CNS 5 Fwd:** Connect to Forward
- CNS 4 Rev:** Connect to Reverse
- CNS 7 DIR:** Connect to Direction
- CNS 10 STEP:** Connect to Step

### Master Drive Connections

- Encoder:** Connect to Encoder A and B signals.
- Limit Switches:** Connect to Limit 1, Limit 2, and Zero Speed signals.
- Safety Features:** Connect to Safety Stop, Emergency Stop, and Fault signals.
- Motor Power:** Connect to Motor AC Input and Output.

### Slave Drive Connections

- Encoder:** Connect to Encoder A and B signals.
- Limit Switches:** Connect to Limit 1, Limit 2, and Zero Speed signals.
- Safety Features:** Connect to Safety Stop, Emergency Stop, and Fault signals.
- Motor Power:** Connect to Motor AC Input and Output.

### Pin Function Tables

Signal	Function	Signal	Function
CNS 2 +A	Encoder A	CNS 12 AEN	Analog Output
CNS 6 -Z	Encoder B	CNS 13 AOCN	Fault
CNS 9 -Z	Amplifier Enable	CNS 8 GND	Ground
CNS 10 STEP	Step	CNS 5 Fwd	Forward
CNS 7 DIR	Direction	CNS 4 Rev	Reverse

Signal	Function	Signal	Function
Limit 1	Limit 1	Limit 2	Limit 2
Zero Speed	Zero Speed	Safety Stop	Safety Stop
Emergency Stop	Emergency Stop	Fault	Fault

### Motor Specifications

- Power:** 172159-1 (AMP), 172163-1 (AMP)
- Current:** 172171-1 (AMP), 172167-1 (AMP)
- Speed:** 172159-1 (RPM), 172163-1 (RPM)
- Acceleration:** 172171-1 (G), 172167-1 (G)

## Doc # 712231005 / Rev. C, 09/13/2018

**Logosol**

**ADVANCED SERVO DRIVE LS-23133SB-2020**

MADE IN USA by LOGOSOL, INC., 2833 JUNCTION AVE SAN JOSE, CA 95134, Tel: (408) 744-0974, WWW.LOGOSOL.COM

**Wiring Diagram:**

- Encoder:** PANASONIC MSMD SERIES MOTOR
- Battery:** 3.6V
- Power Supply:** TRANSFORMER ISOLATED POWER SUPPLY, POWER GND, 24V, MOTOR POWER (+)
- Control Signals:** Enable/Stop, Input 9, Enable, Input 10, Output 2, Gnd
- Motor Connections:** 8 MOTOR AC1 (U), 7 MOTOR AC2 (V), 6 MOTOR AC3 (W), 5 Gnd, 4 Brake/Output1, 3 POWER Gnd, 2 +24V 18Vdc to 36Vdc, 1 +POWER 18Vdc to 180Vdc

**Terminal Block Pinout:**

- HOST (CN1):** 7 -A in, 8 +A in, 5 -Rx, 6 +Rx, 3 -Tx, 4 Tx, 1 +5V, 2 Gnd
- SLAVE (CN6):** 7 -A out, 8 +A out, 5 -Rx, 6 +Rx, 3 -Tx, 4 Tx, 1 N.C., 2 Gnd
- Network:** NETWORK IN (HOST), NETWORK OUT (SLAVE)
- Other:** -5W5, -5W4, -ZeroSpeed, -Termination Rx, -Termination Tx, -Sw6, -Sw5

**Terminal Functions Table:**

Encoder and Computer	Safety Bus	I/O	Motor and Power
<b>CN8</b> 1 2 -A 3 4 -B 5 6 -Z 7 8 Gnd 9 Fault 10 Z-Stop 11 Z-Alarm 12 S-Stop 13 S-Alarm 14 S-Stop 15 S-Alarm 16 OK/Clrf	<b>CN5</b> -Rx/H2 Enc 5V -Z/H3 -B/M/A- -A/SD-/SL- Pull-Up Limit1/SingLeMIT Gnd	<b>CN4</b> -Rx/H1 Gnd -Z -B/M/A+ -A/SD+/SL+ None Limit2/H3 Gnd	<b>CN1</b> 1 Pull-Up 2 Input10 3 Output2 4 Gnd 5 8 MOTOR AC1 (U) 6 7 MOTOR AC2 (V) 7 MOTOR AC3 (W) 8 Gnd 9 Brake/Output1 10 POWER Gnd 11 +24V 18Vdc to 36Vdc 12 +POWER 18Vdc to 180Vdc

Doc # 712231005 / Rev. C, 09/13/2018

**LOGOSOL**

**ADVANCED SERVO DRIVE LS-231 (Q3SB-2020)**

MADE IN USA BY LOGOSOL, INC., 2833 JUNCTION AVE SAN JOSE, CA 95134, TEL: (408) 744-0974, WWW.LOGOSOLINC.COM

**Terminal Block Connections:**

- NETWORK IN (HOST):** 7 - A in, 8 - A in, 9 - Rx, 10 - Tx, 11 - Tx, 12 - Gnd, 13 - 5V.
- NETWORK OUT (SLAVE):** 7 - A out, 8 - A out, 9 - Rx, 10 - Tx, 11 - Tx, 12 - Gnd, 13 - 5V.
- Encoder:** 1 - A in, 2 - A in, 3 - Rx, 4 - Tx, 5 - Tx, 6 - Gnd, 7 - 5V.
- Motor:** 1 - A in, 2 - A in, 3 - Rx, 4 - Tx, 5 - Tx, 6 - Gnd, 7 - 5V.

**Power Supply:**

- Transformer: 24Vdc to 36Vdc.
- Rectifier: 18Vdc to 180Vdc.
- Motor Power: 18Vdc to 180Vdc.

**Signal and Control Connections:**

- Encoder:** 1 - A in, 2 - A in, 3 - Rx, 4 - Tx, 5 - Tx, 6 - Gnd, 7 - 5V.
- Motor:** 1 - A in, 2 - A in, 3 - Rx, 4 - Tx, 5 - Tx, 6 - Gnd, 7 - 5V.

**Table 1: Pin Functions**

Pin	Function	Pin	Function	Pin	Function
1	A in	11	5V	21	18Vdc to 180Vdc
2	A in	12	Gnd	22	18Vdc to 180Vdc
3	Rx	13	5V	23	18Vdc to 180Vdc
4	Tx	14	Gnd	24	18Vdc to 180Vdc
5	Tx	15	Gnd	25	18Vdc to 180Vdc
6	Gnd	16	Gnd	26	18Vdc to 180Vdc
7	5V	17	Gnd	27	18Vdc to 180Vdc
8	A in	18	Gnd	28	18Vdc to 180Vdc
9	A in	19	Gnd	29	18Vdc to 180Vdc
10	Rx	20	Gnd	30	18Vdc to 180Vdc

**Table 2: Pin Functions**

Pin	Function	Pin	Function	Pin	Function
31	18Vdc to 180Vdc	41	18Vdc to 180Vdc	51	18Vdc to 180Vdc
32	18Vdc to 180Vdc	42	18Vdc to 180Vdc	52	18Vdc to 180Vdc
33	18Vdc to 180Vdc	43	18Vdc to 180Vdc	53	18Vdc to 180Vdc
34	18Vdc to 180Vdc	44	18Vdc to 180Vdc	54	18Vdc to 180Vdc
35	18Vdc to 180Vdc	45	18Vdc to 180Vdc	55	18Vdc to 180Vdc
36	18Vdc to 180Vdc	46	18Vdc to 180Vdc	56	18Vdc to 180Vdc
37	18Vdc to 180Vdc	47	18Vdc to 180Vdc	57	18Vdc to 180Vdc
38	18Vdc to 180Vdc	48	18Vdc to 180Vdc	58	18Vdc to 180Vdc
39	18Vdc to 180Vdc	49	18Vdc to 180Vdc	59	18Vdc to 180Vdc
40	18Vdc to 180Vdc	50	18Vdc to 180Vdc	60	18Vdc to 180Vdc

**Table 3: Pin Functions**

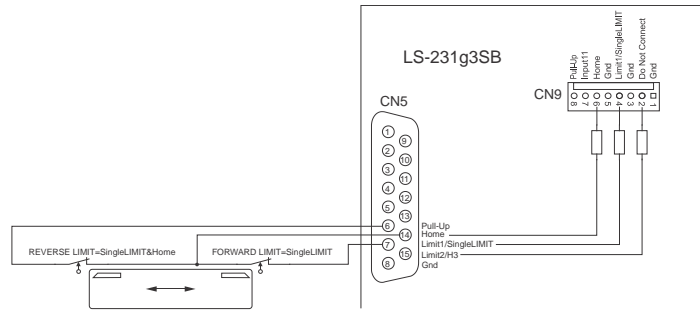
Pin	Function	Pin	Function	Pin	Function
61	18Vdc to 180Vdc	71	18Vdc to 180Vdc	81	18Vdc to 180Vdc
62	18Vdc to 180Vdc	72	18Vdc to 180Vdc	82	18Vdc to 180Vdc
63	18Vdc to 180Vdc	73	18Vdc to 180Vdc	83	18Vdc to 180Vdc
64	18Vdc to 180Vdc	74	18Vdc to 180Vdc	84	18Vdc to 180Vdc
65	18Vdc to 180Vdc	75	18Vdc to 180Vdc	85	18Vdc to 180Vdc
66	18Vdc to 180Vdc	76	18Vdc to 180Vdc	86	18Vdc to 180Vdc
67	18Vdc to 180Vdc	77	18Vdc to 180Vdc	87	18Vdc to 180Vdc
68	18Vdc to 180Vdc	78	18Vdc to 180Vdc	88	18Vdc to 180Vdc
69	18Vdc to 180Vdc	79	18Vdc to 180Vdc	89	18Vdc to 180Vdc
70	18Vdc to 180Vdc	80	18Vdc to 180Vdc	90	18Vdc to 180Vdc

# Logosol Multifunctional Servo Drive LS-231g3SB

Doc # 712231005 / Rev. C, 09/13/2018

## SAMPLE APPLICATION – SingleLIMIT and Home wiring when Sw4=ON

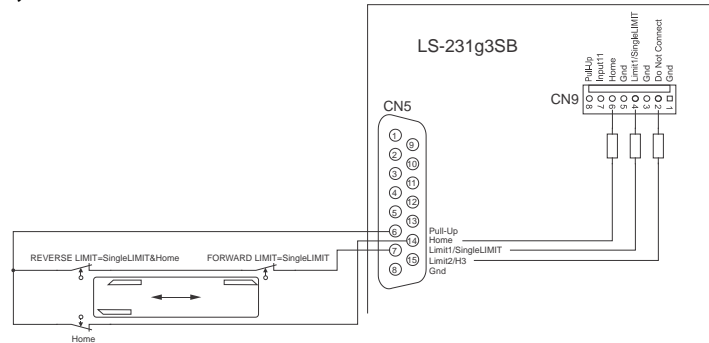
### Forward and Reverse limit switches



State	SingleLIMIT	Home	BridgeSTA	Limit 2 / INbit 5	Limit 1 / INbit 4	Home / INbit 3	LIMIT*
OK	Closed	Closed	0 or 1	1	1	1	Closed
Forward Limit	Open	Closed	0	0	1	1	Open
Forward Limit	Open	Closed	1 (Bridged)	0	1	1	Closed
Reverse Limit	Open	Open	0	0	0	0	Open
Reverse Limit	Open	Open	1 (Bridged)	0	0	0	Closed

**\*Note:** Only when ZeroSpeed (Sw3) = OFF.

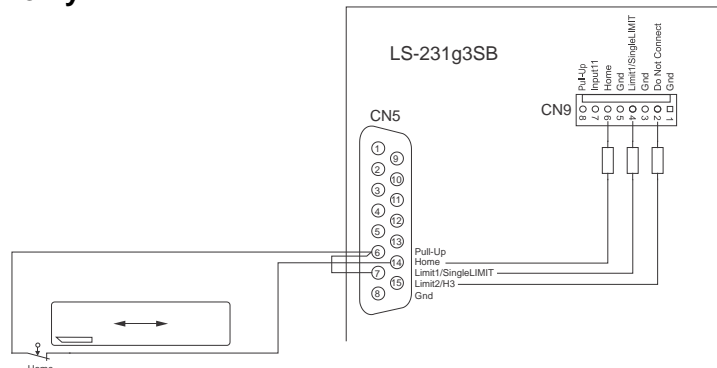
### Forward limit, Reverse limit and Home switches



State	SingleLIMIT	Home	BridgeSTA	Limit 2 / INbit 5	Limit 1 / INbit 4	Home / INbit 3	LIMIT*
OK	Closed	Closed	0 or 1	1	1	1	Closed
Home	Closed	Open	0 or 1	1	0	0	Closed
Forward Limit	Open	Closed	0	0	1	1	Open
Forward Limit	Open	Closed	1 (Bridged)	0	1	1	Closed
Reverse Limit	Open	Open	0	0	0	0	Open
Reverse Limit	Open	Open	1 (Bridged)	0	0	0	Closed

**\*Note:** Only when ZeroSpeed (Sw3) = OFF.

### Home switch only



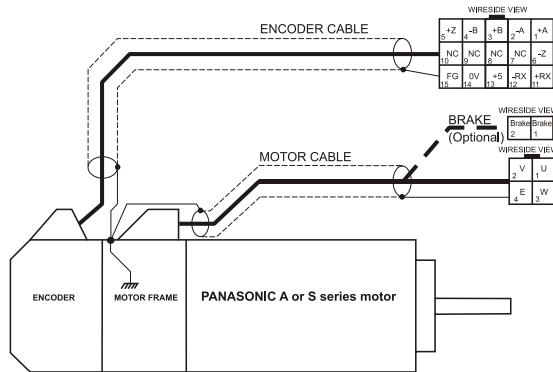
**\*Note:** INbit 4 (Limit 1) = INbit 3 (Home). SingleLIMIT = OFF

# Logosol Multifunctional Servo Drive LS-231g3SB

Doc # 712231005 / Rev. C, 09/13/2018

## PANASONIC A AND S SERIES MOTORS

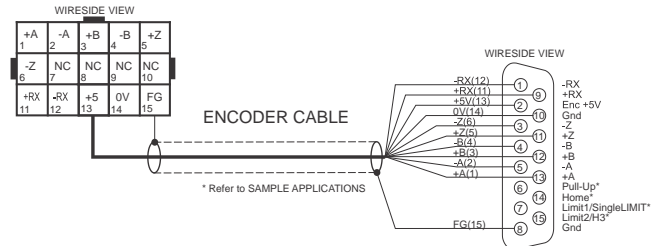
### WIRING DIAGRAM



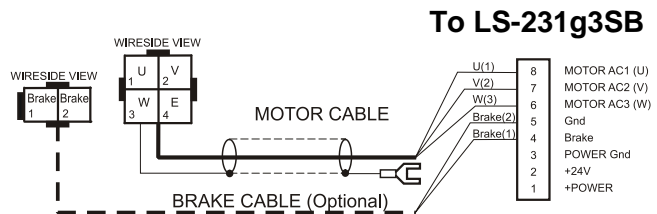
ENCODER CONNECTOR		
PIN#	SIGNAL NAME	WIRE COLOR
1	+ A channel output	Red
2	- A channel output	Pink
3	+ B channel output	Green
4	- B channel output	Blue
5	+ Z channel output	Yellow
6	- Z channel output	Orange
7	NC	NA
8	NC	NA
9	NC	NA
10	NC	NA
11	+RX	Light blue
12	-RX	Purple
13	+5V	White
14	0V	Black
15	FG = motor frame	Black

MOTOR CONNECTOR		
PIN#	SIGNAL NAME	WIRE COLOR
1	U phase	Red
2	V phase	White
3	W phase	Black
4	E = motor frame	Green/yellow

BRAKE CONNECTOR (Optional)		
PIN#	SIGNAL NAME	WIRE COLOR
1	Brake	Yellow
2	Brake	Yellow



MOTOR CONNECTOR		LS-231g3SB CONNECTOR	
AMP CAP 172163-1 10 pins 170365-1		AMP 205206-3 D-Shape 15 Pin Male Crimp Housing 15 pins AMP 5-66507-7	
PIN#	SIGNAL NAME	PIN#	SIGNAL NAME
1	+ A channel output	13	+A
2	- A channel output	5	-A
3	+ B channel output	12	+B
4	- B channel output	4	-B
5	+ Z channel output	11	+Z
6	- Z channel output	3	-Z
11	+RX	9	+RX
12	-RX	1	-RX
13	+5V	2	Enc +5V
14	0V	10	Gnd
FG	SHIELD	8	Gnd (SHIELD)
NA	NA	6	Pull-Up*
NA	NA	14	Home*
NA	NA	7	Limit1/SingleLIMIT*
NA	NA	15	Limit2/H3*



MOTOR CONNECTOR		LS-231g3SB CONNECTOR	
AMP CAP 172159-1 4 pins 170366-1		PHOENIX CONTACT MSTB2.5/8-ST-5.08	
PIN#	SIGNAL NAME	PIN#	SIGNAL NAME
1	U phase	8	MOTOR AC1 (U)
2	V phase	7	MOTOR AC2 (V)
3	W phase	6	MOTOR AC3 (W)
4	E=motor frame		(SHIELD)

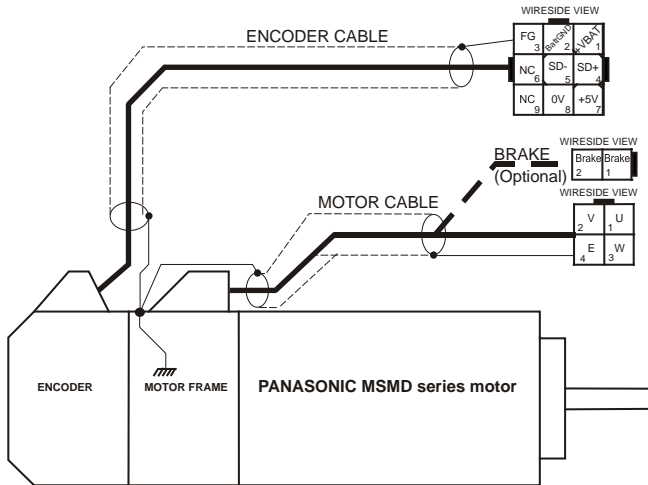
BRAKE (OPTIONAL)		LS-231g3SB CONNECTOR	
AMP CAP 172157-1 2 pins 170366-1		PHOENIX CONTACT MSTB2.5/8-ST-5.08	
PIN#	SIGNAL NAME	PIN#	SIGNAL NAME
1	Brake	4	Brake/Output1
2	Brake	5	Gnd



# Logosol Multifunctional Servo Drive LS-231g3SB

Doc # 712231005 / Rev. C, 09/13/2018

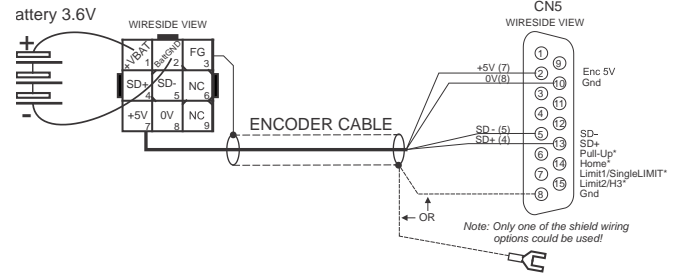
## PANASONIC MSMD SERIES MOTORS



ENCODER CONNECTOR		
PIN#	SIGNAL NAME	WIRE COLOR
1	+VBAT	Red
2	BattGND	Pink
3	FG	Black / Shield
4	SD+	Blue
5	SD-	Violet
6	NC	
7	+5V	White
8	0V	Black
9	NC	

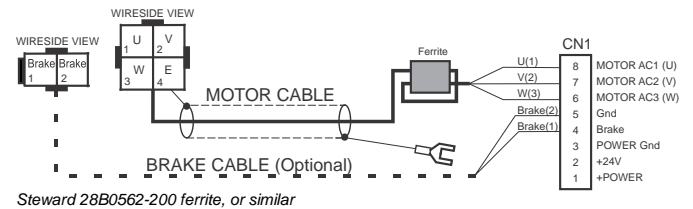
MOTOR CONNECTOR		
PIN#	SIGNAL NAME	WIRE COLOR
1	U phase	Red
2	V phase	White
3	W phase	Black
4	E = motor frame	Green/yellow

BRAKE CONNECTOR (Optional)		
PIN#	SIGNAL NAME	WIRE COLOR
1	Brake	Yellow
2	Brake	Yellow



ENCODER CONNECTOR		Battery 3.6V
AMP CAP 172161-1 2 pins 170365-1		
PIN#	SIGNAL NAME	SIGNAL NAME
1	+VBAT	Battery Positive terminal
2	BattGND	Battery Negative terminal

ENCODER CONNECTOR		CONNECTOR to LS-231g3SB	
AMP CAP 172161-1 5 pins 170365-1		AMP 205206-3 D-Shape 15 Pin Male Crimp Housing 15 pins AMP 5-66507-7	
PIN#	SIGNAL NAME	PIN#	SIGNAL NAME
3	FG	12	See Note:
4	SD+	13	+A
5	SD-	5	-A
7	+5V	2	Enc 5V
8	0V	10	GND



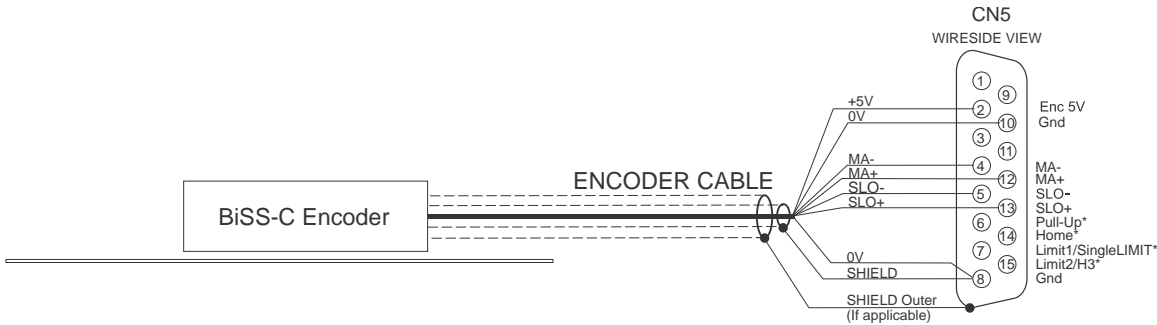
MOTOR CONNECTOR		CONNECTOR to LS-231g3SB	
AMP CAP 172159-1 4 pins 170366-1		PHOENIX CONTACT MSTB2.5/8-ST-5.08	
PIN#	SIGNAL NAME	PIN#	SIGNAL NAME
1	U phase	8	MOTOR AC1 (U)
2	V phase	7	MOTOR AC2 (V)
3	W phase	6	MOTOR AC3 (W).
4	E=motor frame		Case

BRAKE (OPTIONAL)		CONNECTOR to LS-231g3SB	
AMP CAP 172157-1 2 pins 170366-1		PHOENIX CONTACT MSTB2.5/8-ST-5.08	
PIN#	SIGNAL NAME	PIN#	SIGNAL NAME
1	Brake	4	Brake/Output1
2	Brake	5	Gnd

# Logosol Multifunctional Servo Drive LS-231g3SB

Doc # 712231005 / Rev. C, 09/13/2018

## BiSS-C ENCODERS



BiSS-C Encoder signals	LS-231g3SB Connector AMP 205206-3 D-Shape 15 Pin Male Crimp Housing 15 pins AMP 5-66507-7	
SIGNAL NAME	PIN#	SIGNAL NAME
+5V	2	Enc 5V
0V	10	Gnd
0V	8	Gnd
MA+	12	MA+
MA-	4	MA-
SLO+	13	SLO+
SLO-	5	SLO-
Shield	8	Gnd
Shield Outer (If applicable)	Frame	

# Logosol Multifunctional Servo Drive LS-231g3SB

Doc # 712231005 / Rev. C, 09/13/2018

## LS-231g3SB QUICK START GUIDE

### Operating in LDCN mode

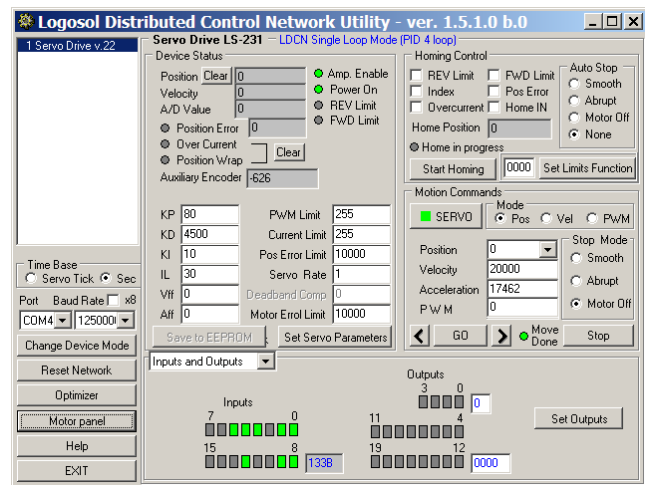
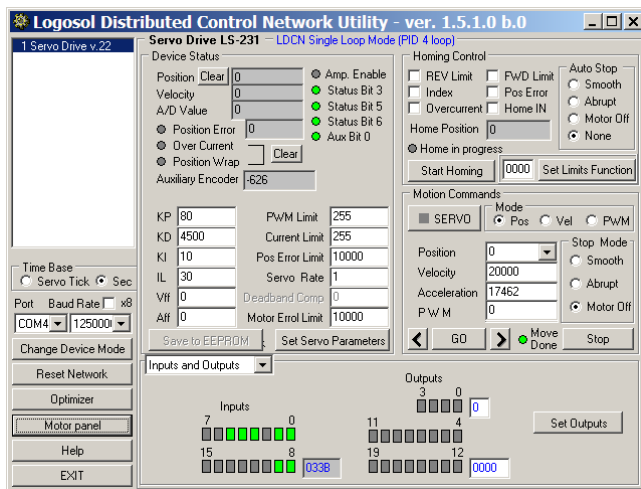
- Set DIP-switches 4, 5 and 6 depending on encoder interface you use;
- Connect power supply to LS-231g3SB;
- Connect your motor, encoder, hall sensors, and any other I/O you may have;
- Connect USB or RS-232 adapter and RJ-45 network cable between LS-231g3SB and your host computer.

### Software installation

- Download and install Logosol Distributed Control Network Utility from:  
<http://www.logosolinc.com/software/2-logosoldistributedcontrolnetworkldcn.html>

### Initial Connection to the Host

- Turn on the power supply;
- Start **Logosol Distributed Control Network Utility**;
- Choose the proper COM port;
- Click **Reset network** button;
- Load the motor file from **Motor panel / Load Motor settings**. Load motor settings or complete **Motor Initialization** procedure if you do not have the motor setting for the motor you use;
- Click **SERVO** button and enter the target position in **Motion Commands / Position**;
- Click **GO** button. The motor should rotate slowly toward the target position. Click **Stop** to interrupt the motion. More information about using LDCN utility is available in LDCN Help.



# Logosol Multifunctional Servo Drive LS-231g3SB

Doc # 712231005 / Rev. C, 09/13/2018

## Motor Initialization

1. Complete steps 1 to 4 from *Initial Connection to the Host* section.
2. Set the drive in LDCN mode by clicking Change Device Mode button and select LDCN mode.
3. Click **Motor Panel** button.
4. Set the motor parameters.

**Peak current, Peak time** – Peak current is % of the MAX MOTOR OUTPUT CURRENT (20A for LS-231g3SB-2020). The output current will be limited to the Peak current for Time=Peak time. After that the current will be limited to the Continuous current. Peak current (%) and Peak time should be set depending on **motor and application** parameters.

**Continuous current, Overload time** – The drive output will be limited to this value for overload time. After the expiring of the Overload time the output will be disabled. If “Off” is set the drive output will not be affected. Continuous current (%) and Overload time should be set depending on **motor and application** parameters.

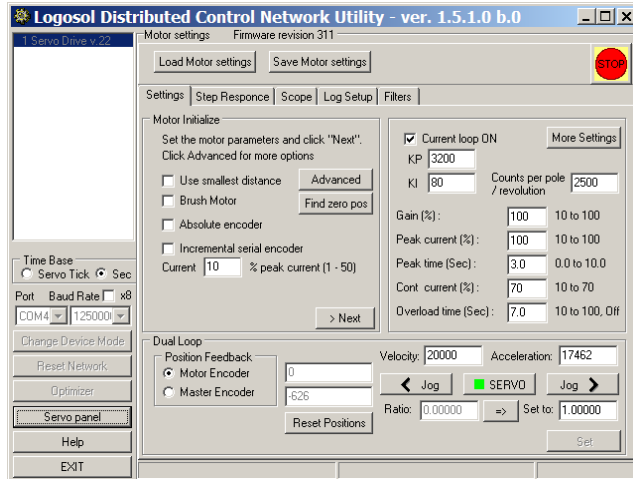
**Gain** – Set Gain=100%. This parameter sets the ratio between command value and the drive PWM output. Gain=50% will limit the PWM output value to 1/2 of its maximum.

**Current** – Motor current will be limited to this value during the **initialization procedure only**. If the current is too low the initialization procedure will not work. Higher values may damage the motor. Start with values 5%-20% and increase the current depending on the results.

**Current Loop** – In many applications using “current loop” will improve the drive performance. Check **Current loop ON** box and click Set button to activate this mode.

**More settings** – click More Settings to select encoder resolution.

5. Select the motor type.
6. To start the initialization click **Next** and follow the instructions on the screen.



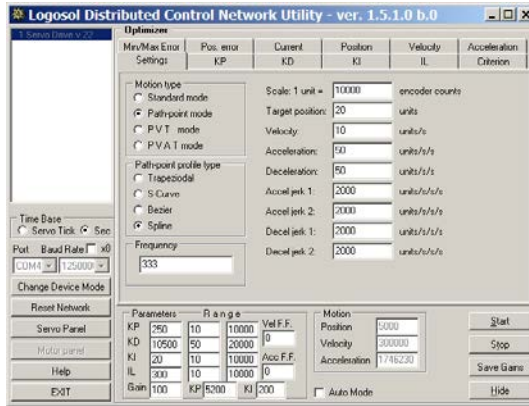
# Logosol Multifunctional Servo Drive LS-231g3SB

Doc # 712231005 / Rev. C, 09/13/2018

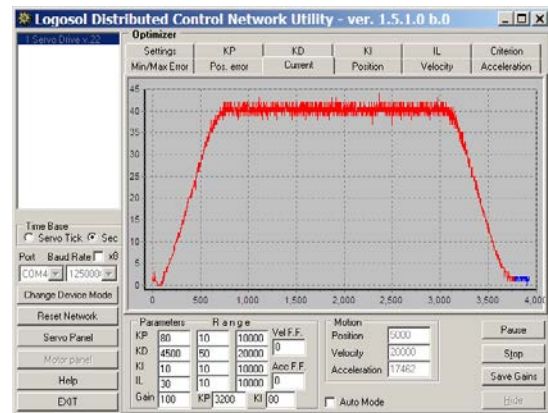
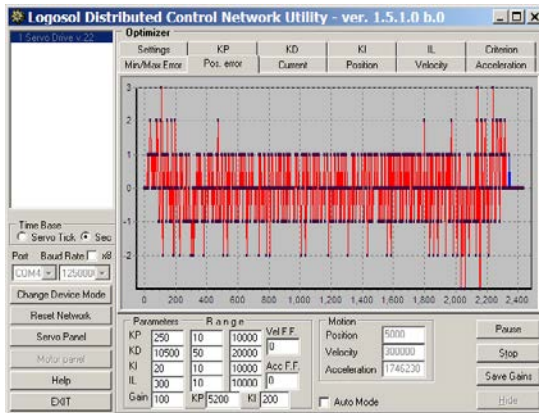
## Motor Tuning – all modes

To tune the motor select optimizer screen.

1. Enter the motion settings based on the **Scale 1 unit** = encoder counts per motor revolution. Use motion that allow to have all three sections of the motion – Acceleration / Constant velocity / Deceleration.



2. Minimize the **Position error** by adjusting **Parameters** values. Click **Save Gains** when done. Motor current shown on **Current** screen follows the motion profile and the motor load. Spikes or sudden changes may be a sign of mechanical problems or bad servo tuning.



# Logosol Multifunctional Servo Drive LS-231g3SB

Doc # 712231005 / Rev. C, 09/13/2018

## Setting the drive in dual servo loop mode

The drive should be initialized in single servo loop mode before setting it to dual loop mode.

1. Turn off the power supply.
2. Connect the master encoder and the dual loop master encoder interface module LS-2311 accordingly to one of the sample applications described earlier.
3. Turn on the power supply and run LDCN Utility.
4. While still in single loop mode, run the motor and make sure the auxiliary encoder position on the screen changes.
5. Click **Motor Panel** button.
6. Select **Master Encoder** in the **Position Feedback** radio group and click **Set** button.

**Note:** The dual loop mode is available only in LDCN mode and in the standard Analog Input mode. Switching between these two modes does not change the single/dual loop mode. However, setting the drive in any other mode sets the drive in single loop mode.

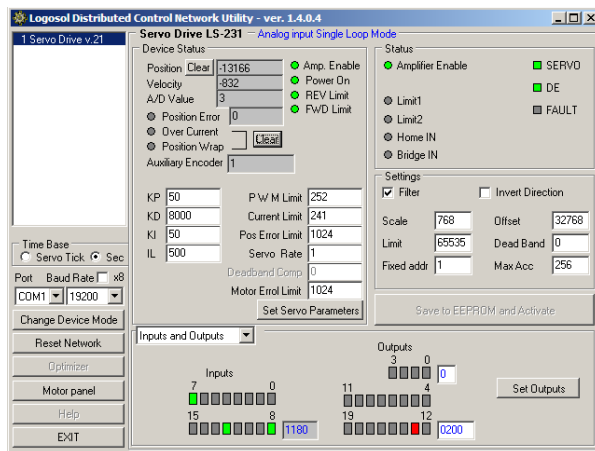
## Mode Selection

Various modes can be set using **Change Device Mode** button. Clicking this button activates a menu with all possible modes of the controller. After setting the device mode, the PID parameters and all other mode specific parameters should be set and saved to the non-volatile memory of the drive.

When an analog input mode is selected, set analog input parameters. **Filter** enables/disables filtering of the analog input. **Invert direction** can be used to invert the motor direction. **Scale** is the factor used to convert the analog input value (-32768 to 32767) to velocity. For example, scale of 10 produces maximum velocity of 327670 or 97653 encoder counts per second ( $327670 / 3.3554432 = 97653$ ). The **offset** determines the zero analog input and is usually set to 32767 – middle of the whole range. **Limit** is the maximum analog value. **Deadband** limits the minimum non-zero value thus reducing the oscillations at zero velocity. **Acceleration** value determines how quickly the commanded velocity will be reached. For example, a value of 256 corresponds to 1,490,116 encoder count/s/s ( $256 / 0.00017179869$ ).

In all step modes, the **step rate** should be set. It represents the factor between steps and encoder counts.

Fixed address should be set to a value between 1 and 31. It is recommended to use different values for each drive in the network.



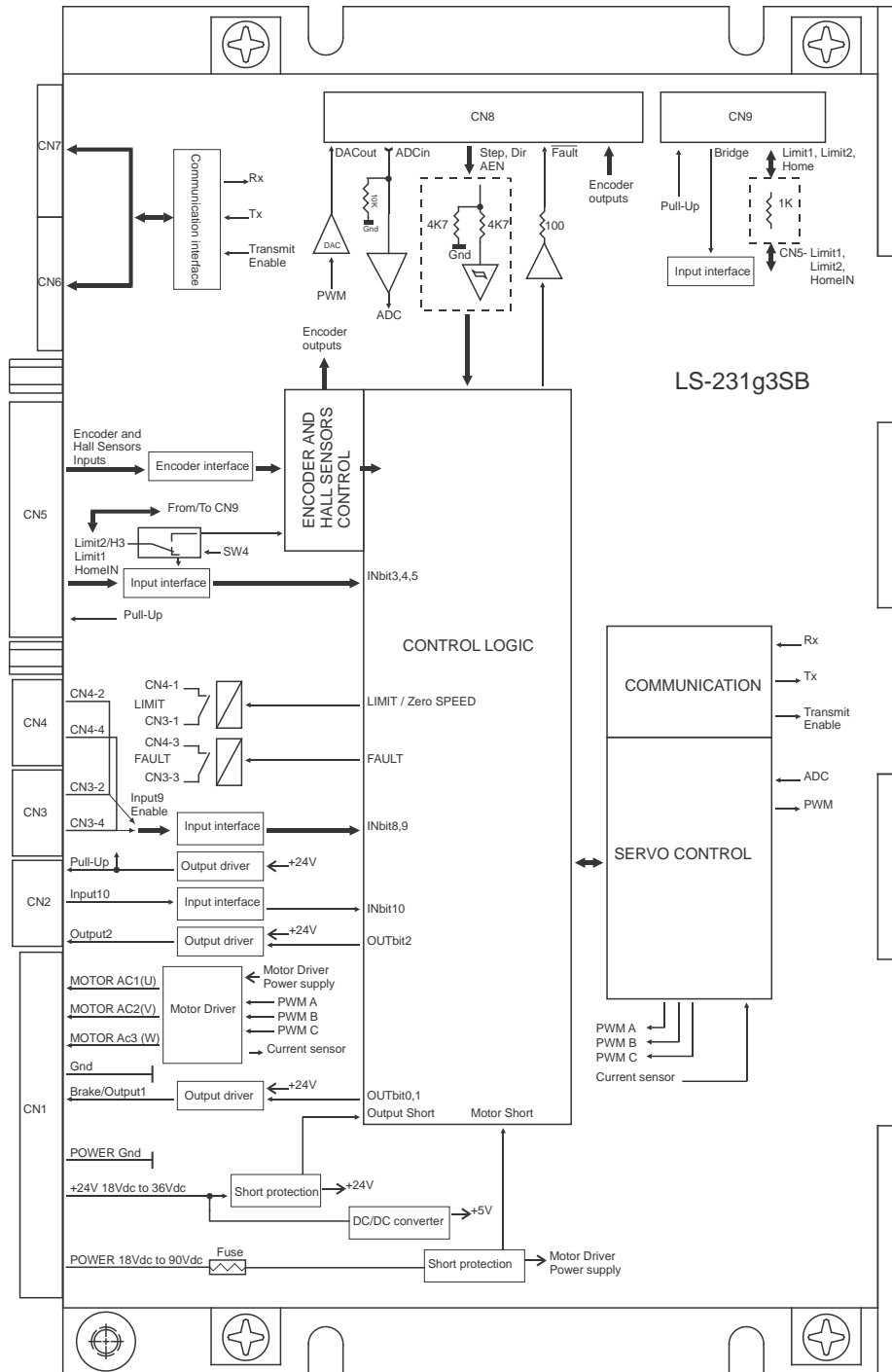
# Logosol Multifunctional Servo Drive LS-231g3SB

Doc # 712231005 / Rev. C, 09/13/2018

## LS-231g3SB ARCHITECTURE

### Overview

LS-231g3SB Logosol Multifunctional Servo Drive is a highly integrated servo control module for Brushless motors including motion controller, servo amplifier with integrated sinusoidal output, Serial communication interface, Amplifier interface, Step & direction interface, Safety bus and protection circuit. LS-231g3SB can be configured to work in 8 different modes.



Block diagram

# Logosol Multifunctional Servo Drive LS-231g3SB

Doc # 712231005 / Rev. C, 09/13/2018

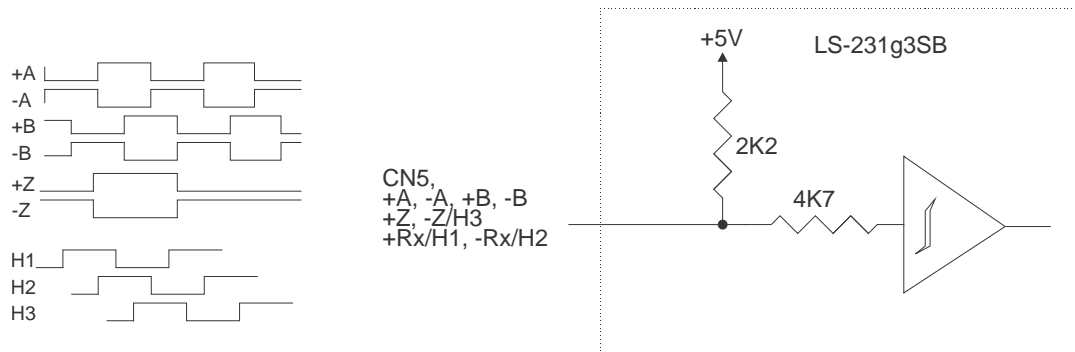
## Encoder and Commutator interface

### Incremental encoder

The Encoder interface accepts two square wave inputs – +A, +B (+A, -A, +B, and -B for differential encoders) from an incremental encoder. Ideally these square waves are 50% duty cycle and +/-90 degrees out of phase. The time between encoder state transitions is limited and should not be less than 0.1uS when encoder filter is off and 0.2uS when encoder filter is on. With ideally formed encoder pulses, this would correspond to a 2500 line encoder (10000 counts/rev) rotating at 60,000/30,000 rpm. Refer to Logosol Quick start guide / Motor initialization to select the encoder mode.

Encoder Index +Z (+Z and -Z for differential encoders) is used by Servo control module to capture Home position.

Hall sensors provide the motor position. They are used by motor control module to determine motor Index position after power up and during the motor initialization procedure.



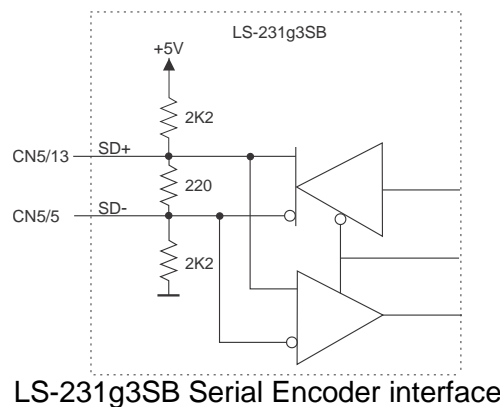
Encoder and Commutator interface

Besides the position control, encoder phases, index and hall sensors are used to determine the motor commutation synchronizing the output PWM every motor rotation according to hall and encoder data.

## Serial and BiSS-C encoder

### Serial Encoder interface

In Serial Encoder mode, CN5 pin13 and pin5 of LS-231g3SB are reconfigured as RS-485 interface. LS-231g3SB drive reads the motor position every servo cycle (51.2μS). External 3.6V battery (if applicable) keeps the encoder position when system power is down.



LS-231g3SB Serial Encoder interface

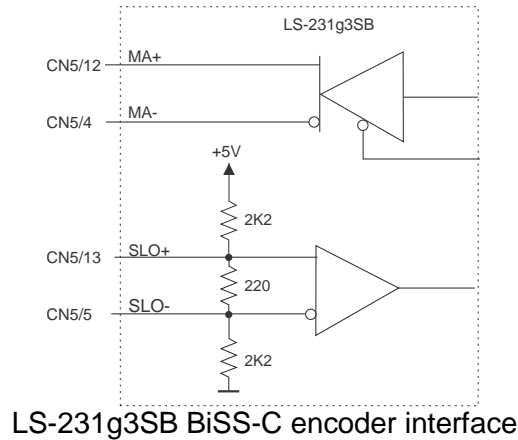


# Logosol Multifunctional Servo Drive LS-231g3SB

Doc # 712231005 / Rev. C, 09/13/2018

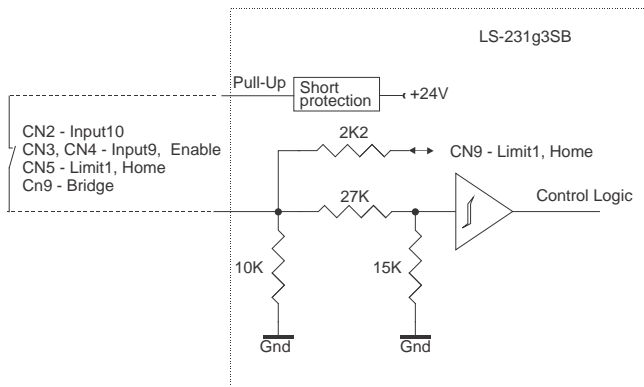
## BiSS-C interface

BiSS-C Serial Absolute Encoder interface is a fast synchronous serial interface. The interface consist of two differential lines. **MA** (CN5 pin4 **MA-** and pin12 **MA+**) transmits timing information (clock) from LS-231g3SB to the encoder. **SLO** (CN5 pin5 **SLO-** and pin13 **SLO+**) are the receiving lines for the position send from the encoder to LS-231g3SB.

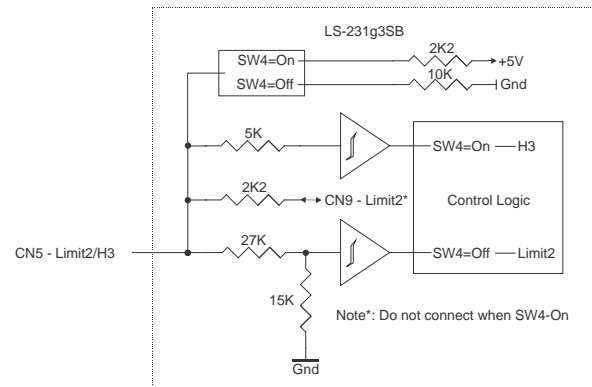


LS-231g3SB BiSS-C encoder interface

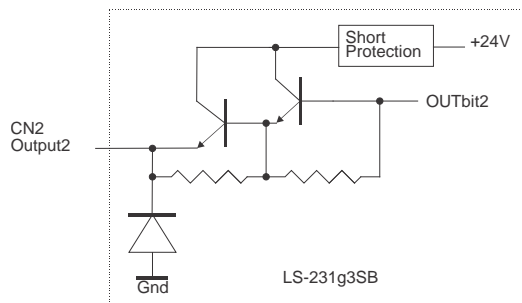
## Control interface



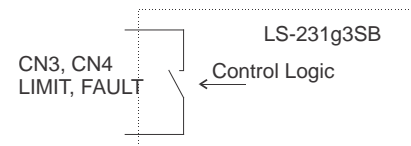
Inputs interface



Limit2 / H3 interface



Output 2



LIMIT (ZzeroSpeed), Fault outputs

For inputs and outputs descriptions refer to *Safety Features / LS-231g3SB diagnostic and I/O* section.

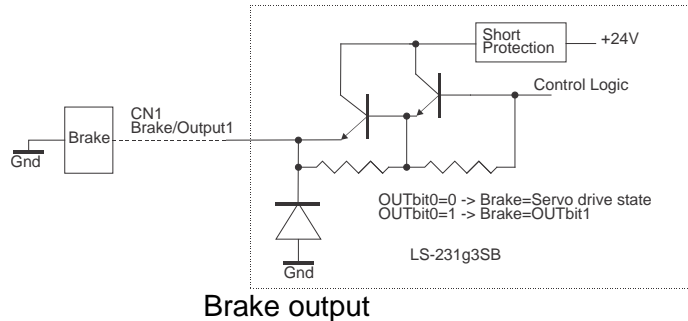
# Logosol Multifunctional Servo Drive LS-231g3SB

Doc # 712231005 / Rev. C, 09/13/2018

## Brake/Output1

When OUTbit0=1 Brake/Output1 follows the state of OUTbit1.

When OUTbit0=0 Brake/Output1 follows the Servo drive state described in *LS-231g3SB Diagnostic and I/O*. Brake current must not exceed 0.3A



## Amplifier interface and Step & Direction interface.

If Analog mode is selected, ADC (analog input) is differential and may be adjusted between  $\pm 2.5V$  to  $\pm 10.0V$ . The load is 10K.

“Analog offset” is a constant added to the amplifier’s input control voltage and can be used in applications with asymmetric load. Refer to *Safety Features - LS-231g3SB diagnostic and I/O* section for Analog mode description.

Step & Direction mode uses the same interface. In this mode Step, Dir (direction) and AEN (enable) inputs are active. Refer to *Safety Features - LS-231g3SB diagnostic and I/O* section for Step & Direction mode description.

Fault output and Encoder (+A, -A, +B, -B, +Z, -Z) outputs are TTL compatible.

All digital inputs are HC (high speed CMOS) compatible and with 4K7 pull-down resistors.

## Serial Command Interface

Serial communication with the LS-231g3SB adheres to a full-duplex (4 wire) 8-bit asynchronous protocol with one start bit, followed by 8 data bits (lsb first), followed by a single stop bit.

The communication protocol supports full-duplex multi drop RS-485 interface that allows multiple drives to be controlled over a single RS-485 port. The host sends commands over its RS-485 transmit line and receives all status data over shared RS-485 receive line.

The command protocol is a strict master/slave protocol in which the host sends a command packet to a specific slave. The data are stored in the slave buffer until the end of the servo cycle (51.2 $\mu$ S) and then the command is executed. Then the slave Drive sends back a status packet. Typically the host does not send another command until a status packet has been received to insure that it does not overwrite any previous command data still in use.

Each command packet consist of:

Header byte (0xAA)

Address byte – individual or group (0x00 – 0xFF)

Command byte

0 – 15 data bytes

Checksum byte

# Logosol Multifunctional Servo Drive LS-231g3SB

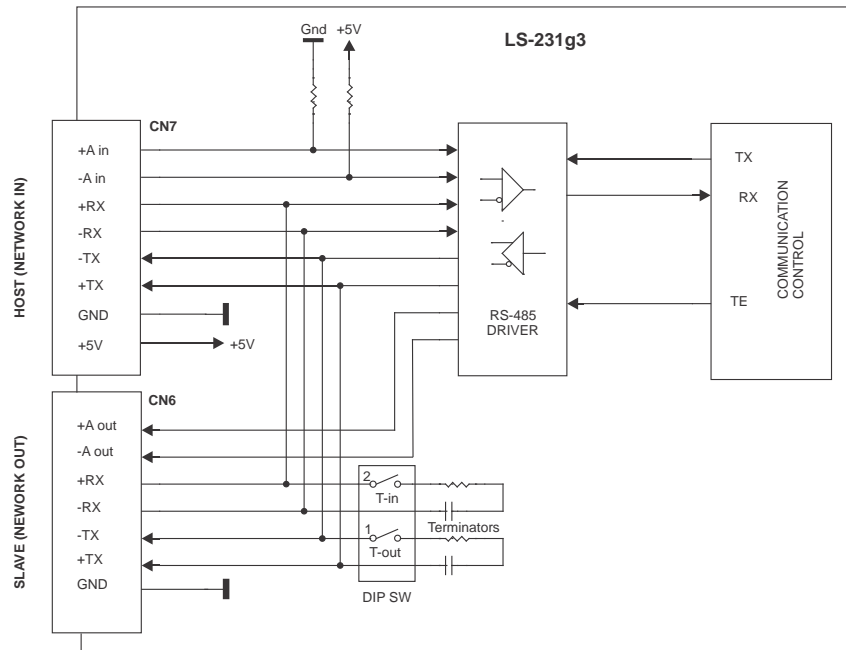
Doc # 712231005 / Rev. C, 09/13/2018

The command byte is divided into upper and lower nibbles: the lower nibble is the command value; the upper nibble is the number of additional data bytes, which will follow the command byte. The checksum byte is 8-bit sum of the address byte, the command byte, and the data bytes. The number of data bytes depends on the particular command chosen. After a command is issued, the corresponding drive will send back a status packet consisting of:

*Status byte*

*0-23 optional bytes of status data*

*Checksum byte*



Communication interface

The status byte contains basic status information about the Drive, including a checksum error flag for the command just received. The optional data bytes may include data such as the position, velocity, etc. and are programmable by the host. The checksum byte is the 8-bit sum of the status byte and the additional status data bytes.

The transmission of all 16-bit and 32-bit data is always with the least significant byte first.

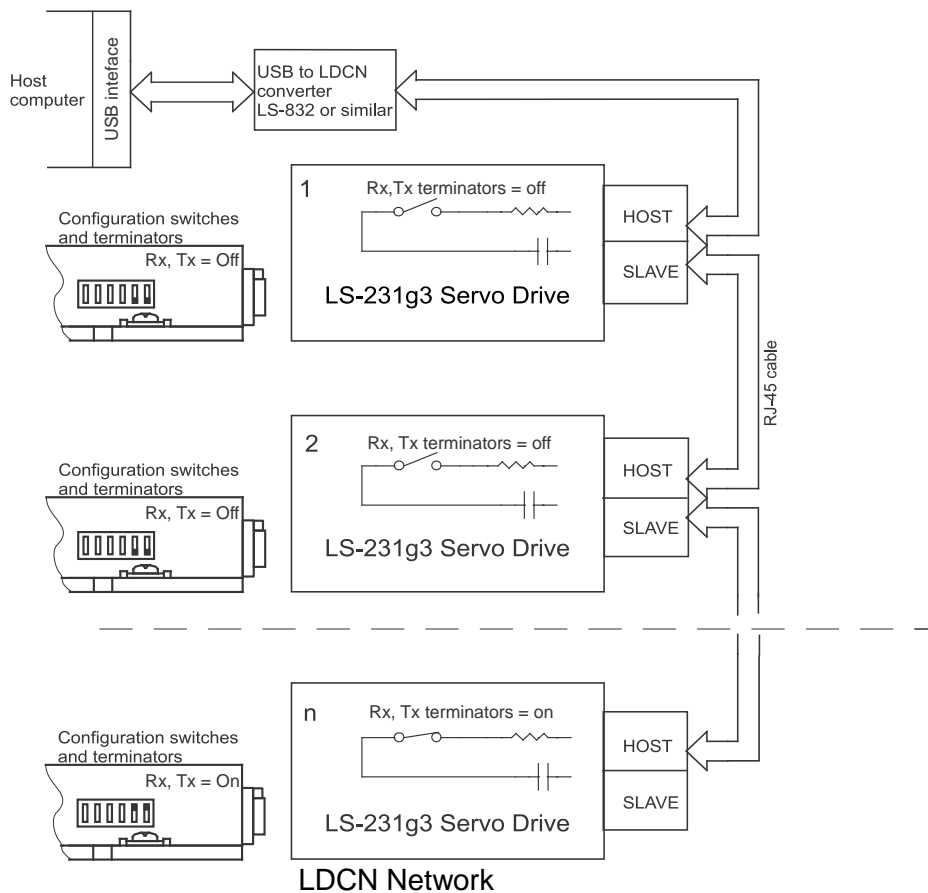
# Logosol Multifunctional Servo Drive LS-231g3SB

Doc # 712231005 / Rev. C, 09/13/2018

## Addressing

Rather than hard-wired or switch-selected address, the host dynamically sets the address of each LS-231g3SB with the aid of the daisy-chained *A-in* and *A-out* lines. This allows additional drives to be added to a RS-485 network with no hardware changes. *A-in* of the first Drive is pulled low, its communication is enabled and the default address is 0x00. When the “Set Address” command is issued to give this Drive new unique address, it will lower it’s *A-out* pin. Connecting *A out* pin to the *A in* pin of the next servo drive in the network will enable its communication at default address of 0x00. Repeating this process allows a variable number of controllers present to be given unique addresses.

In any non-LDCN modes, each LS-231g3SB should have a unique fixed address. In this case, the host can establish communication with a controller without sending Hard Reset command.



## Group Addresses

In addition to the individual address, each controller has a secondary group address. Several LS-231g3SB controllers may share a common group address. This address is useful for sending commands, which must be performed simultaneously by a number of drivers (e.g. *Start motion*, *Set Baud Rate*, etc.). When a LS-231g3SB receives a command sent to its group address, it will execute the command but not send back a status packet. This prevents data collisions on the shared response line. When programming group addresses, however, the host can specify that one member of the group is the “group leader”. The group leader will send back a status packet just like it would for a command sent to its individual address. The group address is programmed at the same time as the unique individual address using the *Set Address* command.

# Logosol Multifunctional Servo Drive LS-231g3SB

---

Doc # 712231005 / Rev. C, 09/13/2018

## Changing communication rates

The default baud rate after power-up is 19.2Kb/S. Baud rates up to 1250Kb/S may be used at maximum servo rate. After communication has been established with all servo drives on a single network, the baud rate may be changed to a higher value with the *Set Baud Rate* command.

## Servo control

LS-231g3SB uses a “proportional-integral-derivative”, or PID filter. The position, velocity and acceleration are programmed as 32-bit quantities in units of encoder counts per servo ticks. For example, a velocity of 10 revolutions per second of a motor with a 500 line encoder (2000 counts/rev) at a tick time of 51.2  $\mu$ Sec. would correspond to a velocity of 1.024 counts/tick. Velocities and accelerations use the lower 16 bits as a fractional component so the actual programmed velocity would be 1.024 x 65536 or 67109. An acceleration of 40 rev/sec/sec (which would bring us up to the desired speed in 1/4 sec) would be 0.00021 counts/tick/tick; with the lower 16 bits the fractional component, this would be programmed as 0.00021 x 65536 or 14. Position is programmed as a straight 32-bit quantity with no fractional component. Note that if the servo rate divisor is modified, the time dependent velocity and acceleration parameters will also have to be modified.

## PWM mode

If the position servo is disabled, the motor is operated in a raw PWM output mode and no trapezoidal or velocity profiling is performed. In this mode, a user specified PWM value is outputted directly to the amplifier. A PWM value of 255 corresponds to 100% and a value of 0 corresponds to 0%. Command position is continually updated to match the actual position of the motor and there will be no abrupt jump in the motor's position when position or velocity modes are entered. Also while the position servo is disabled, the command velocity is continually updated to match the actual velocity of motor. Thus, when velocity mode is entered, there will be no discontinuity in the motor's velocity. Trapezoidal profile motions, however, will still force the motor to begin at zero velocity.

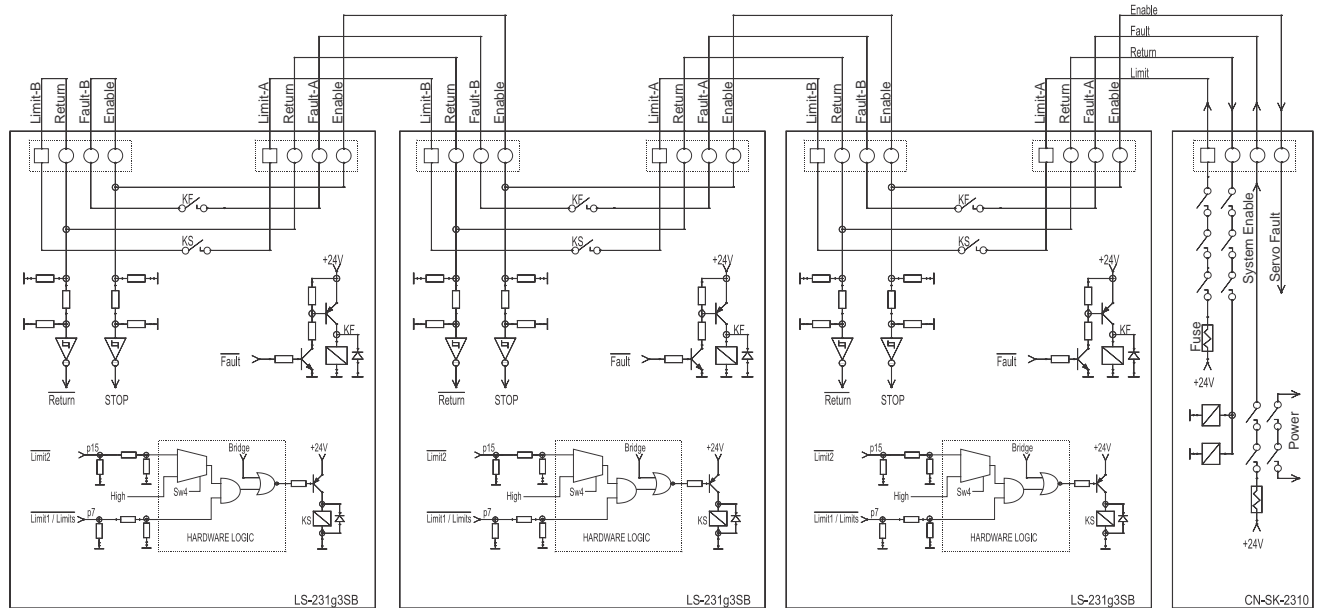
# Logosol Multifunctional Servo Drive LS-231g3SB

Doc # 712231005 / Rev. C, 09/13/2018

## STATUS and SAFETY features

### Safety Bus

Safety Bus interface is provided for safety operation for several drives. If the bus is connected any drive **FAULT** will disable all the drives connected to the network. The drive LEDs and the Status bits (*LS-231g3SB Diagnostic and I/O*) are used for diagnostic. For better control Safety bus can be connected to SK-2310 or other controller with similar functions.



### Safety Bus

**FAULT** output depends on internal drive status. Refer to *LS-231g3SB Diagnostic and I/O* for details.

**LIMIT** output is closed when:

- **Limit1** and **Limit2** (CN5, CN9) are High;
- **BridgeSTA** bit is High.

To operate without *Safety bus* - connect **Enable** input to +24Vdc.

**Motor short protection** – the drive is protected against short circuit output to output or output to ground.

**Overvoltage protection** –The drive will be in Fault Condition and the drive output will be disabled when the input voltage is above specified limits (Refer to *Technical Specifications* section of this document).

# Logosol Multifunctional Servo Drive LS-231g3SB

Doc # 712231005 / Rev. C, 09/13/2018

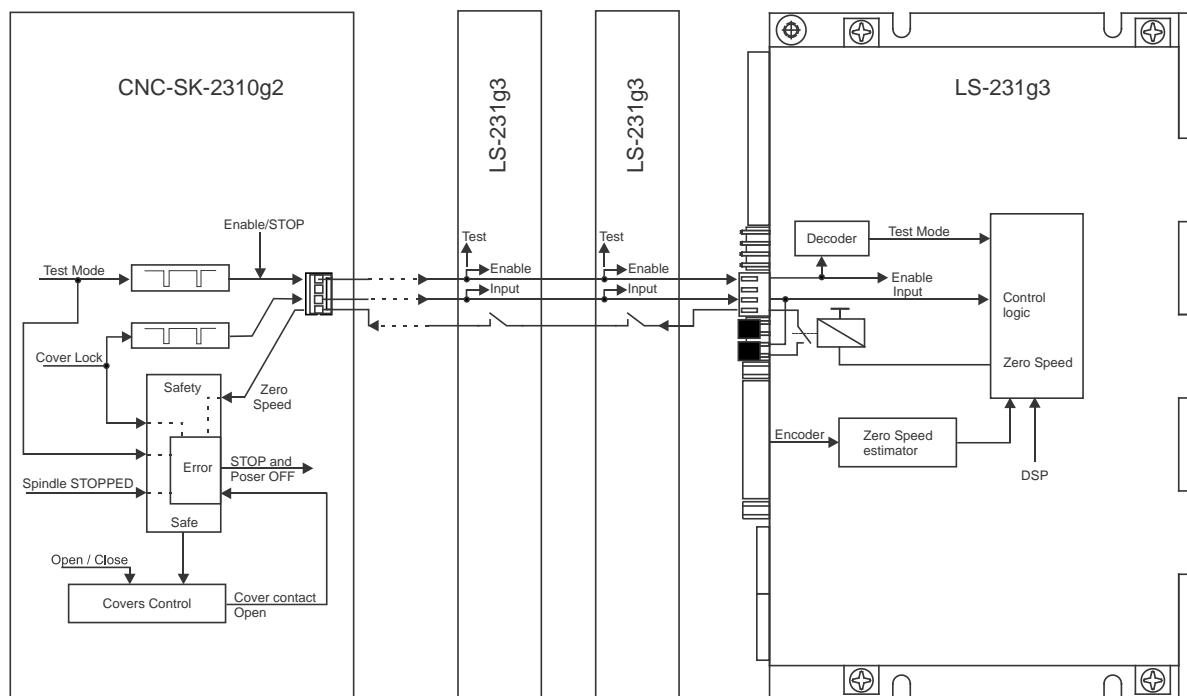
## ZERO SPEED\* Automation Grade Safety

“Zero Speed” safety can be used in machines, or automated systems, that don’t require “Safe Zone sensor” or “Home Switch” based safety. In this mode LIMIT relay chain is functioning as a “Zero Speed” chain and is closed when the all motors are standstill for more than 2sec. Drives “Zero Speed” chain state, combined with CNC-SK-2310g2 “Cover Lock” output, and “Spindle Stopped” input are used to control system “Safe” state.

System is “Safe” when: “Zero Speed” chain is closed, Spindle is stopped and “Covers” are not locked.

For more information refer to CNC-SK-2310g2 manual (<http://www.logosolinc.com/files/downloads/CNC/ls-2310g2.pdf>).

## Zero Speed mode



**Note:** Available only with CNC-SK-2310g2

# Logosol Multifunctional Servo Drive LS-231g3SB

Doc # 712231005 / Rev. C, 09/13/2018

## LS-231g3SB Diagnostic and I/O

### LDCN mode state and diagnostics

MODEbit[C,B,A] = 000

Status Bit 6 Limit2	Status Bit 5 Home Source	Status Bit 4 Pos_error	Status Bit 3 Power	Status Bit 0 Move_done	Auxiliary Bit 2 Servo	Auxiliary Bit 0 Index	Stop Cmd Bit 0 Pic_ae=DE	CONDITION	ORANGE	GREEN	RED	FAULT	BRAKE (OUTbit0=0)
0	1	1	0	1	0	1	0	No Motor Power after LDCN Init	ON	ON	OFF	RELAY Closed	Engaged
1	1	X	1	1	0	1	0	AxisOFF	OFF	Blink	OFF		Released
Limit2 Source	Home Source	0	1	X	1	Encoder	1	ServoON		ON			
X	X	X	X	1	0	0	0	ErrHALL	ON	ON	Blink	CN8pin9 High	Engaged
				0	0	1	0	ErrEEPROM			ON		
0	1	1	0	1	0	1	0	No Motor Power	ON	ON	ON		
1	0	X	1	1	0	1	0	Overheat	ON	OFF	Blink		
								Disabled	Alternate		Blink		
1	0	X	1	1	0	0	0	EncoderERR (Reset required)	blink	OFF	Blink		
1	0	1	1	1	0	1	0	Brake or Output Short	Alternate		Blink		
1	0	1	0	X	0	1	1	Stopped	Alternate		ON		
0	1	1	0	X	0	1	1	MotorShort	ON	OFF	Blink	RELAY Open	
1	1	1	0	X	0	1	1	Motor PowerDROP	ON	ON	ON		
0	0	1	0	X	0	1	1	OverLOAD	OFF	Blink	Blink		
1	0	1	0	X	0	0	1	EncoderERR (Reset required)	Blink	OFF	Blink	CN8pin9 Low	
X	X	1	1	1	0	X	1	PositionERROR	Blink	ON			

### Amplifier mode state and diagnostics

MODEbit[C,B,A] ≠ 000

Status Bit 6 Limit2	Status Bit 5 Home Source	Status Bit 4 Pos_error	Status Bit 3 Power	Status Bit 0 Move_done	Auxiliary Bit 2 Servo	Auxiliary Bit 0 Index	DE INbit12	<u>CONDITION</u>	ORANGE	GREEN	RED	FAULT RELAY	BRAKE (OUTbit0=0)
Limit2 Source	Home Source	X	1	X	1	Encoder	1	ServoON	OFF	ON	OFF	Closed	Released
1	1	1	1	1	0	1	0	Ready	OFF	Blink	OFF		Engaged
0	1	1	0	1	0	1	0	No Motor Power after Power-UP	ON	ON	OFF		
X	X	X	0	0	0	1	0	EEPROM Checksum Error	ON	ON	Blink fast		
X	X	X	0	1	0	0	0	Invalid HALL	ON	ON	blink		
X	1	1	0	1	0	0	0	PowerUP EncoderERR (Reset required)	Blink	OFF	OFF		
0	1	1	0	X	0	X	0	No Motor Power	ON	ON	ON		
0	1	1	0	1	0	1	0	Motor PowerDROP	Blink	Blink	Blink		
1	1	1	1	1	0	1	0	Ready after PositionERROR	Blink	ON	Blink		
X	1	1	0	1	0	1	0	Ready after Overheat or Motor short	ON	OFF	Blink		
1	1	1	1	1	0	1	0	Ready after Overload	OFF	Blink	Blink		
1	0	1	1	1	0	1	0	Triggered Stop	Alternate		Blink		
1	0	1	1	1	0	0	0	EncoderERR (Reset required)	Blink	OFF	Blink		
1	0	1	1	1	0	1	0	Triggered Output short	Alternate		Blink		
0	1	1	0	1	0	1	1	Triggered MotorShort or Overheat	ON	OFF	Blink		
1	1	1	0	1	0	1	1	Triggered Motor PowerDROP	Blink	Blink	Blink		
1	1	1	1	1	0	1	1	Triggered PositionERROR	Blink	ON	Blink		
1	0	1	0	1	0	1	1	Triggered Stop or Output short	Alternate	ON	Blink		
1	0	1	0	1	0	0	1	Triggered EncoderERR (Reset required)	Blink	OFF	Blink		
0	0	1	0	1	0	1	1	Triggered Overload	OFF	Blink	Blink		



# Logosol Multifunctional Servo Drive LS-231g3SB

Doc # 712231005 / Rev. C, 09/13/2018

## INPUTS

Bit	Name	Description
INbit0	StatusBit5	SW4=OFF – Diagnostic / Limit1 / HomeIN SW4=ON – Diagnostic / HomeIN
INbit1	StatusBit6	SW4=OFF – Diagnostic / Limit2 / Input10 / Input11 SW4=ON – Diagnostic / SingleLIMIT / Input10 / Input11
INbit2	StatusBit3	Power_on diagnostic bit.
INbit3	HomeIN	Home Input. (CN9pin6/CN5pin14). Pin=HIGH, Bit='1'
INbit4	Limit1	SW4=OFF – Reverse Limit. (CN9pin4/CN5pin7) Pin=HIGH, Bit='1' SW4=ON – Same as HomeIN (CN9pin6/CN5pin14). Pin=HIGH, Bit='1'
INbit5	Limit2 / SingleLIMIT	SW4=OFF – Forward Limit. (CN9pin2/CN5pin15) Pin=HIGH, Bit='1' SW4=ON – SingleLIMIT (CN9pin4/CN5pin7) Pin=HIGH, Bit='1'
INbit6	BridgeSTA	1= Limit Switches BRIDGED.
INbit7	AEN	Amplifier enable input. (CN8pin12) Pin=HIGH, Bit='1' (Mode dependant function)
INbit8	Enable (Enable/Stop)	Hardware Enable/Stop input. (CN3pin4 & CN4pin4) Pin=HIGH, Bit='1' = Drive enable. Pin=LOW, Bit='0' = Hardware stop.
INbit9	Input9	None dedicated input. (CN3pin6/CN4pin6) Pin=HIGH, Bit='1'
INbit10	Input10	None dedicated input. (CN2 pin2) Pin=HIGH, Bit='1'
INbit11	Input11	LDCN mode - None dedicated input. (CN9pin7) Pin=HIGH, Bit='1' Amplifier modes - Hardware Bridge input. (CN9pin7) Pin=HIGH, Bit='1' Limit Switches bridged.
INbit12	DE	Drive enable status bit. LDCN mode = PIC_AE, Other modes = Amplifier Enable state.
INbit13	Reserved.	N.A.
INbit14	Dir	Multifunctional input. (CN8pin7) Pin=HIGH, Bit='1' (Mode dependant function)
INbit15	FAULT	0 = FAULT relay contact closed. 1 = FAULT relay contact open.

## OUTPUTS

Bit	Name	Description																														
OUTbit0	BrakeMODE	0 = Brake/Output1 depends on Servo drive state. See diagnostic tables. 1 = Brake/Output1 is following Output1 bit:																														
OUTbit1	Output1	Bit='0', Brake/Output1(CN1pin4) = OFF Bit='1', Brake/Output1(CN1pin4) = HIGH																														
OUTbit2	Output2 (CN2pin3)	Bit='0', Output2=OFF Bit='1', Output2=HIGH																														
OUTbit3	N.A.	Reserved – clear to '0'																														
OUTbit4	HomeSEL1	Select homming input source, Motor and Master encoders latch source. <table><tr><th>HomeSEL2 OUTbit8</th><th>HomeSEL1 OUTbit4</th><th>StatusBit5 INbit0</th><th>StatusBit6 INbit1</th><th>Motor encoder latch source</th><th>Master encoder latch source</th></tr><tr><td>0</td><td>0</td><td>Limit1</td><td>Limit2/SingleLIMIT</td><td rowspan="2">Motor Encoder phase Z</td><td rowspan="2">Master Encoder phase Z</td></tr><tr><td>0</td><td>1</td><td>HomeIN</td><td>Input10</td></tr><tr><td>1</td><td>0</td><td>HomeIN</td><td>Input10</td><td colspan="2">Input10 (change)</td></tr><tr><td>1</td><td>1</td><td>HomeIN</td><td>Input11</td><td colspan="2">Input11 (change)</td></tr></table>	HomeSEL2 OUTbit8	HomeSEL1 OUTbit4	StatusBit5 INbit0	StatusBit6 INbit1	Motor encoder latch source	Master encoder latch source	0	0	Limit1	Limit2/SingleLIMIT	Motor Encoder phase Z	Master Encoder phase Z	0	1	HomeIN	Input10	1	0	HomeIN	Input10	Input10 (change)		1	1	HomeIN	Input11	Input11 (change)			
HomeSEL2 OUTbit8	HomeSEL1 OUTbit4	StatusBit5 INbit0	StatusBit6 INbit1	Motor encoder latch source	Master encoder latch source																											
0	0	Limit1	Limit2/SingleLIMIT	Motor Encoder phase Z	Master Encoder phase Z																											
0	1	HomeIN	Input10																													
1	0	HomeIN	Input10	Input10 (change)																												
1	1	HomeIN	Input11	Input11 (change)																												
OUTbit5	Bridge	Limit relay contact <table><tr><th>UserREL OUTbit6</th><th>Bridge OUTbit5</th><th>Input11</th><th>LDCN mode Limit Relay</th><th>Amplifier mode Limit Relay</th></tr><tr><td>0</td><td>0</td><td>0</td><td colspan="2">Depends on Limit1 and Limit2.</td></tr><tr><td>0</td><td>1</td><td>0</td><td colspan="2">Closed. BridgeSTA = 1</td></tr><tr><td>0</td><td>0</td><td>1</td><td colspan="2">Depends on Limit1 and Limit2.</td></tr><tr><td>1</td><td>0</td><td>X</td><td colspan="2">General purpose user relay - Open</td></tr><tr><td>1</td><td>1</td><td>X</td><td colspan="2">General purpose user relay - Closed</td></tr></table>	UserREL OUTbit6	Bridge OUTbit5	Input11	LDCN mode Limit Relay	Amplifier mode Limit Relay	0	0	0	Depends on Limit1 and Limit2.		0	1	0	Closed. BridgeSTA = 1		0	0	1	Depends on Limit1 and Limit2.		1	0	X	General purpose user relay - Open		1	1	X	General purpose user relay - Closed	
UserREL OUTbit6	Bridge OUTbit5	Input11	LDCN mode Limit Relay	Amplifier mode Limit Relay																												
0	0	0	Depends on Limit1 and Limit2.																													
0	1	0	Closed. BridgeSTA = 1																													
0	0	1	Depends on Limit1 and Limit2.																													
1	0	X	General purpose user relay - Open																													
1	1	X	General purpose user relay - Closed																													
OUTbit6	UserREL																															
OUTbit7	SmartSTOP	SmartSTOP 1= Enables the SmartSTOP timer and hardware logic.																														
OUTbit8	HomeSEL2	Select homming input source, Motor and Master encoders latch source. <table><tr><th>HomeSEL2 OUTbit8</th><th>HomeSEL1 OUTbit4</th><th>StatusBit5 INbit0</th><th>StatusBit6 INbit1</th><th>Motor encoder latch source</th><th>Master encoder latch source</th></tr><tr><td>0</td><td>0</td><td>Limit1</td><td>Limit2/SingleLIMIT</td><td rowspan="2">Motor Encoder phase Z</td><td rowspan="2">Master Encoder phase Z</td></tr><tr><td>0</td><td>1</td><td>HomeIN</td><td>Input10</td></tr><tr><td>1</td><td>0</td><td>HomeIN</td><td>Input10</td><td colspan="2">Input10 (change)</td></tr><tr><td>1</td><td>1</td><td>HomeIN</td><td>Input11</td><td colspan="2">Input11 (change)</td></tr></table>	HomeSEL2 OUTbit8	HomeSEL1 OUTbit4	StatusBit5 INbit0	StatusBit6 INbit1	Motor encoder latch source	Master encoder latch source	0	0	Limit1	Limit2/SingleLIMIT	Motor Encoder phase Z	Master Encoder phase Z	0	1	HomeIN	Input10	1	0	HomeIN	Input10	Input10 (change)		1	1	HomeIN	Input11	Input11 (change)			
HomeSEL2 OUTbit8	HomeSEL1 OUTbit4	StatusBit5 INbit0	StatusBit6 INbit1	Motor encoder latch source	Master encoder latch source																											
0	0	Limit1	Limit2/SingleLIMIT	Motor Encoder phase Z	Master Encoder phase Z																											
0	1	HomeIN	Input10																													
1	0	HomeIN	Input10	Input10 (change)																												
1	1	HomeIN	Input11	Input11 (change)																												
OUTbit9 to 11	N.A.	Reserved – clear to '0'																														
OUTbit12	MODEbitA	See Mode tables.																														
OUTbit13	MODEbitB																															
OUTbit14	MODEbitC																															
OUTbit15	MODEbitD																															
OUTbit16	FAULT	CN8pin9 FAULT output mode																														
OUTbit17 to 19	N.A.	Reserved – clear to '0'																														

# Logosol Multifunctional Servo Drive LS-231g3SB

Doc # 712231005 / Rev. C, 09/13/2018

## LDCN Single loop mode

MODEbit[C,B,A] = 000

Name	Bit	Function
DE	INbit12	Returns Drive Enable bit (PIC_AE). Bit='1' when PIC_AE bit is SET (Power driver is enabled).
AEN CN8pin12	INbit7	None dedicated input. Pin=HIGH, Bit='1' Routed to Master encoder Latch strobe (CAP6).
Dir CN8pin7	INbit14='0'	Master encoder counter phase A (CAP4)
Step CN8pin13	N.A.	Master encoder counter phase B (CAP5)
Fault CN8pin9	N.A.	OUTbit16=0 HIGH when PIC_AE bit is CLEARED (Power driver is disabled) or NO fault condition is present. LOW when PIC_AE bit is SET (Power driver is enabled) and fault condition is present. OUTbit16=1 HIGH when PIC_AE bit is SET (Power driver is enabled) and NO fault condition is present. LOW when PIC_AE bit is CLEARED (Power driver is disabled) or fault condition is present. If MODEbitD = 0 Inserted 0.8 $\mu$ S wide pulse with 51.2 $\mu$ S period. Used by LS-2311 Master Encoder interface. If MODEbitD = 1 No pulse. Slave drive Enable output.

## LDCN Dual loop mode

MODEbit[C,B,A] = 001

Name	Bit	Function
DE	INbit12	Returns Drive Enable bit (PIC_AE). Bit='1' when PIC_AE bit is SET (Power driver is enabled).
AEN CN8pin12	INbit7	LOW = Master encoder error. Routed to Master encoder Latch strobe (CAP6). Master encoder index rising edge is represented with 0.4 $\mu$ S wide pulse.
Dir CN8pin7	INbit14='0'	Master encoder counter phase A (CAP4)
Step CN8pin13	N.A.	Master encoder counter phase B (CAP5)
Fault CN8pin9	N.A.	OUTbit16=0 HIGH when PIC_AE bit is CLEARED (Power driver is disabled) or NO fault condition is present. LOW when PIC_AE bit is SET (Power driver is enabled) and fault condition is present. OUTbit16=1 HIGH when PIC_AE bit is SET (Power driver is enabled) and NO fault condition is present. LOW when PIC_AE bit is CLEARED (Power driver is disabled) or fault condition is present. Inserted 0.8 $\mu$ S wide pulse with 51.2 $\mu$ S period. Used by LS-2311 Master Encoder interface.

## Analog input Single/Dual loop mode

MODEbit[C,B,A] = 010

Name	Bit	Function
DE	INbit12	Returns AEN input (CN8pin12). Pin=HIGH, Bit='1'
AEN CN8pin12	INbit7	0 = Amplifier disabled, fault conditions clear. 1 = Amplifier enable.
Dir CN8pin7	INbit14='0'	Master encoder counter phase A (CAP4)
Step CN8pin13	N.A.	Master encoder counter phase B (CAP5)
Fault CN8pin9	N.A.	OUTbit16=1 LOW = fault. HIGH = NO fault. OUTbit16=0 LOW when DE is LOW or fault condition is present. HIGH when DE is HIGH and NO fault condition is present.

## Analog input mode with direction invert input

MODEbit[C,B,A] = 011

Name	Bit				
DE	INbit12				
AEN CN8pin12	INbit7	AEN (CN8.12)	Dir (CN8.7)	Function	DE (INbit12)
		0	X	Amplifier disabled, fault conditions clear.	0
		1	0	Amplifier enable.	1
		1	1	Amplifier enable, analog input (ADCin) inverted.	1
Dir CN8pin7	INbit14				
Step CN8pin13	N.A.	Routed to CAP6.			
Fault CN8pin9	N.A.	OUTbit16=0 LOW = fault. HIGH = NO fault. OUTbit16=1 LOW when DE is LOW or fault condition is present. HIGH when DE is HIGH and NO fault condition is present.			

# Logosol Multifunctional Servo Drive LS-231g3SB

Doc # 712231005 / Rev. C, 09/13/2018

## Enable Positive/Enable Negative Analog input mode

MODEbit[C,B,A] = 100

Name	Bit				
DE	INbit12	AEN (CN8.12)	Dir (CN8.7)	Function	DE (INbit12)
AEN CN8pin12	INbit7	0	0	Amplifier disabled, fault conditions clear.	0
		1	1		
Dir CN8pin7	INbit14	0	1	Amplifier enable, analog input (ADCin) inverted.	1
		1	0	Amplifier enable.	1
Step CN8pin13	N.A.	Routed to CAP6.			
Fault CN8pin9	N.A.	OUTbit16=0 LOW = fault. HIGH = NO fault. OUTbit16=1 LOW when DE is LOW or fault condition is present. HIGH when DE is HIGH and NO fault condition is present.			

## Quadrature encoder mode

MODEbit[C,B,A] = 101

Quadrature Encoder Mode			MODEbitD = 1
Name	Bit	Function	
DE	INbit12	Returns AEN input (CN8pin12).	
AEN CN8pin12	INbit7	0 = Amplifier disabled, fault conditions clear. 1 = Amplifier enable. Routed to Master encoder Latch strobe (CAP6).	
Dir CN8pin7	INbit14='0'	Master encoder counter phase A (CAP4)	If MODEbitD = 1 OR Input11 = 'High' Master Encoder is stopped.
Step CN8pin13	N.A.	Master encoder counter phase B (CAP5)	
Fault CN8pin9	N.A.	OUTbit16=0 LOW = fault. HIGH = NO fault. OUTbit16=1 LOW when DE is LOW or fault condition is present. HIGH when DE is HIGH and NO fault condition is present.	

## Step & Dir mode

MODEbit[C,B,A] = 110

Name	Bit				
DE	INbit12	AEN (CN8.12)	Dir (CN8.7)	Function	DE (INbit12)
AEN CN8pin12	INbit7	0	X	Amplifier disabled, fault conditions clear.	0
		1	0	Amplifier enable, direction positive.	1
Dir CN8pin7	INbit14='0'	1	1	Amplifier enable, direction negative.	1
Step CN8pin13	N.A.	0->1 transition = Step. 1->0 transition = NO change.			
Fault CN8pin9	N.A.	OUTbit16=0 LOW = fault. HIGH = NO fault. OUTbit16=1 LOW when DE is LOW or fault condition is present. HIGH when DE is HIGH and NO fault condition is present.			

## Step Positive/Step Negative mode

MODEbit[C,B,A] = 111

Name	Bit	Function																					
DE	INbit12	Returns AEN input (CN8.12).																					
AEN CN8pin12	INbit7	0 = Amplifier disabled, fault conditions clear. 1 = Amplifier enable.																					
Dir CN8pin7	INbit14='0'	<table><tr><th>Dir (CN8.7)</th><th>Step (CN8.13)</th><th>Action</th></tr><tr><td>0</td><td>0</td><td>No action</td></tr><tr><td>0</td><td>0-&gt;1 transition</td><td>Positive step</td></tr><tr><td>1</td><td>0-&gt;1 transition</td><td>No action</td></tr><tr><td>0-&gt;1 transition</td><td>0</td><td>Negative step</td></tr><tr><td>0-&gt;1 transition</td><td>1</td><td>No action</td></tr><tr><td>1</td><td>1</td><td>No action</td></tr></table>	Dir (CN8.7)	Step (CN8.13)	Action	0	0	No action	0	0->1 transition	Positive step	1	0->1 transition	No action	0->1 transition	0	Negative step	0->1 transition	1	No action	1	1	No action
Dir (CN8.7)	Step (CN8.13)	Action																					
0	0	No action																					
0	0->1 transition	Positive step																					
1	0->1 transition	No action																					
0->1 transition	0	Negative step																					
0->1 transition	1	No action																					
1	1	No action																					
Step CN8pin13	N.A.																						
Fault CN8pin9	N.A.	OUTbit16=0 LOW = fault. HIGH = NO fault. OUTbit16=1 LOW when DE is LOW or fault condition is present. HIGH when DE is HIGH and NO fault condition is present.																					

All modes can be selected using LDCN (Logosol Distributed Control Network) Utility. Refer to *LOGOSOL LS-231g3SB QUICK START GUIDE - Mode Selection* section for details.

## Power-up and Reset Conditions

After Power-up or reset, the following state is established:

*Motor position is reset to zero*

*Velocity and acceleration values are set to zero*

*All gain parameters and limit values are set to zero*

*The servo rate divisor is set to 1 (51.2  $\mu$ Sec servo rate)*

*The PWM value is set to zero*

*The controller is in PWM mode*

*The default status data is the status byte only*

*The individual address is set to 0x00 and the group address to 0xFF (group leader not set)*

*Communications are disabled pending a low value of A in*

*The baud rate is set to 19.2 Kb/S*

*In the status byte, the move done and pos\_error flags will be set and home\_in\_progress flag will be cleared.*

*In the auxiliary status byte, the pos\_wrap, servo\_on, accel\_done, slew\_done and servo\_overrun flags will be cleared.*

## Coordinated motion control – Theory of operation

LS-231g3SB contains a path point buffer with room for 256 entries. Each entry is a goal position for the motor. When the Servo Drive enters its special path mode, it will automatically move from one point to the next at a user selectable rate in steps of 51.2  $\mu$ Sec. The Servo Drive moves the motor between goal points at a constant velocity such that it always arrives at the next path point in exactly the pre-calculated time. When sets of path points are downloaded into multiple controllers, and then the paths started simultaneously, the individual axes will execute their paths with exact\* synchronization.

If, for example, the time between the points is set to 5.12 mSec, the path point buffer has room for about 1.3 seconds worth of motion. Typically, the host computer downloads the first part of a path to the LS-231g3SB buffers and then starts the path mode. As the buffers become depleted, additional path points are dynamically added while the axes are still in motion, until the path is complete. The timing requirements for the host require that it be able to dynamically download new path points before the path point buffers empty completely. With a path point buffer size of 1.3 seconds or even more with lower frequency, even a non-real time host, such as a PC running Windows, can easily keep up with the task of re-filling the path point buffers as needed.

The actual multi-axis paths, which are downloaded into the LS-231g3SB path point buffers, are calculated by the host computer. In addition to creating the geometry desired (arcs, lines, etc.), the path should be smooth, adhering to the physical acceleration and velocity limits of the motors being controlled. Because the host computer actually creates the paths, any path the user can create can be executed, and paths can involve up to 31 axes. Most typically, coordinated straight-line motions, 2-axis circular motions, or S-curve profiling motions are created.

Note that motions created with the path mode are independent of any acceleration or velocity values loaded using the Load Trajectory command.

## Path Accuracy

The path accuracy of the LS-231g3SB Servo Drive is more than adequate for most CNC machine control or robot control applications. For very high speed or very high accuracy applications, however, there are two types of path errors to consider: absolute path errors and timing errors.

## Absolute Path Errors

Absolute path accuracy is the accuracy with which a series of calculated path points with straight line segments between them matches the actual curved path desired. For example, a circle, which is approximated by only 5 path points, will form a pentagon rather than a circle. The maximum error between the side of the pentagon and the circle may be quite large. A larger number of path points will produce a

---

\* The exactness of the synchronization is subject to crystal frequency accuracy and other timing factors discussed later.

# Logosol Multifunctional Servo Drive LS-231g3SB

Doc # 712231005 / Rev. C, 09/13/2018

smaller error. In general, accuracy of an approximated path will be a function of the number of path points used, and the radius of the curve.

Because LS-231g3SB uses a fixed number of points per second, moving more slowly will result in a more accurate path than moving quickly. Also, a higher frequency path will be more accurate than a lower frequency path. The main advantages of using a slower path, however, are that fewer path points need to be calculated, less data needs to be sent to the controllers, and the path point buffer will last longer.

The maximum absolute path error can be approximated by the formula:

$$\text{Error} = R \times (1 - \cos(V / (2 \times F \times R)))^*$$

where **R** is the radius of the curve (in inches), **V** is the velocity of the motion (in inches/sec), and **F** is the path point frequency. For example, a one-inch diameter circle with a velocity of 1 inch per second and a path frequency of 30 Hz would have a maximum error of 0.00028 inches.

## Timing Errors

If the timing of multiple axes is not perfectly synchronized, there will be a deviation from the desired path from the fact that one axis will be ahead or behind in time. The exact deviation will depend on the path geometry.

The first type of timing error results from multiple axes not starting at exactly the same time. When a “start path” command is issued to a group of controllers, they will all start within +/- 0.000025 seconds of one another.

The second type of timing error results from inaccuracies in the frequencies of the oscillators running on each LS-231g3SB controller. (If all Servo Drives are timed from the same oscillator, this error is zero.) Typical oscillator variations (for the same operating temperature) are about 10 parts per million. Therefore, after running a path for 10 seconds, for example, the timing error would be about +/-0.0001 seconds.

By adding both of these timing errors together, and then multiplying by the path velocity, we get the total distance that one axis can be ahead of another axis. For a 10 second motion, while moving at 1 inch per second, we could have one axis moving ahead of another by at most 0.000125 inches. The actual worst-case deviation (moving along a 45 degree angle) will produce an error from the ideal path of 0.000125 inches. Over a total distance of 10 inches traveled, this gives a basic accuracy of ±0.0000125 inches per inch of travel. Other examples, of course, will produce different accuracy figures.

Note that errors due to timing only accumulate during a coordinated motion and are, in essence, reset with each new move. Therefore, if errors due to timing do become a problem, the paths should be broken up into shorter moves.

Eliminating those errors is possible by enabling the hardware synchronization mode using *Enable / Disable hardware synchronization mode* command.

---

\* The cosine function should be executed for an angle in radians.

# Logosol Multifunctional Servo Drive LS-231g3SB

Doc # 712231005 / Rev. C, 09/13/2018

## COMMAND SPECIFICATION

### List of Commands

Command	CMD Code	# Data bytes	Description	While Moving?
Reset position	0x0	0	Sets position counter to zero	No
Set address	0x1	2	Sets the individual and group addresses	Yes
Define status	0x2	1-2	Defines which data should be sent in every status packet	Yes
Read status	0x3	1-2	Causes particular status data to be returned just once	Yes
Load trajectory	0x4	1-15	Loads motion trajectory parameters	Maybe*
Start motion	0x5	0	Executes the previously loaded trajectory	Maybe**
Set gain	0x6	14	Sets the PID gains and operating limits	Yes
Stop motor	0x7	1	Stops the motor in one of three manners	Yes
I/O control	0x8	1	Controls the "Brake out" mode and sets the path point mode frequency	Yes
Set home mode	0x9	1	Sets conditions for capturing the home position	Yes
Set baud rate	0xA	1	Sets the baud rate (group command only)	Yes
Clear bits	0xB	0	Clears the sticky status bits	Yes
Save as home	0xC	0	Saves the current position in the home position register	Yes
Add path points	0xD	0-n	Adds up to 7 path points to the device buffer and starts the path point mode motion	Yes
Nop	0xE	0	Simply causes the defined status data to be returned	Yes
Extended commands	0xE	1-n	Extended commands (n > 0)	No
Hard reset	0xF	0	Resets the controller to its power-up state.	Yes

\*Only allowed while moving if the "start motion now" bit of the trajectory control word is not set or if the "profile mode" bit is set for velocity mode.

\*\*Only allowed while moving if the previously loaded trajectory has the "profile mode" bit set for velocity mode.

### Command Description

#### Reset Position

Command value: 0x0  
Number of data bytes: 0  
Command byte: 0x00  
Data bytes:  
None

#### Description:

Resets the 32-bit encoder counter to zero. Do not issue this command while executing a trapezoidal profile motion.

# Logosol Multifunctional Servo Drive LS-231g3SB

Doc # 712231005 / Rev. C, 09/13/2018

## Set Address

Command value: 0x1  
Number of data bytes: 2  
Command byte: 0x21

### Data bytes:

1. Individual address: 0x01-0x7F (initial address 0x00)  
Group Address: 0x80-0xFF (initial value 0xFF)

### Description:

Sets the individual address and group address. Group addresses are always interpreted as being between 0x80 and 0xFF. If a Drive is to be a group leader, clear bit 7 of the desired group address in the second data byte. The module will automatically set bit 7 internally after flagging the Drive as a group leader. (If bit 7 of the second data byte is set, the module will default to being a group member.) The first time this command is issued after power-up or reset, it will also enable communications for the next Drive in the network chain by lowering it's "A out" signal.

## Define Status

Command value: 0x2  
Number of data bytes: 1 or 2  
Command byte: 0x12 or 0x22

### Data bytes:

1. Status items: (default: 0x0000)

Bit	0:	send position (4 bytes)
	1:	send A/D value (1 byte)
	2:	send actual velocity (2 bytes – no fractional component)
	3:	send auxiliary status byte (1 byte)
	4:	send home position (4 bytes)
	5:	send device ID and version number (2 bytes) (First byte - Motor controller device ID = 0, Second byte - version number = 20 to 29 (decimal))
	6:	send current position error (2 bytes)
	7:	send number of points in the path buffer (1 byte)
	8:	send digital inputs (2 bytes)
	9:	send analog inputs (2 bytes)
	10, 11:	reserved. Clear to 0
	12:	send watchdog status (2 bytes)
	13:	send motor position and position error (6 bytes)
	14, 15:	reserved. Clear to 0

### Description:

Defines what additional data will be sent in the status packet along with the status byte. Setting bits in the command's data byte will cause the corresponding additional data bytes to be sent after the status byte. The status data will always be sent in the order listed. For example if bits 0 and 3 are set, the status packet will consist of the status byte followed by four bytes of position data, followed by the aux. status byte, followed by the checksum. The status packet returned in response to this command will include the additional data bytes specified. On power-up or reset, the default status packet will include only the status byte and the checksum byte.

# Logosol Multifunctional Servo Drive LS-231g3SB

Doc # 712231005 / Rev. C, 09/13/2018

## Read Status

Command value: 0x3  
Number of data bytes: 1 or 2  
Command byte: 0x13 or 0x23

Data bytes:

1. Status items:

Bit	0:	send position (4 bytes)
	1:	send A/D value (1 byte)
	2:	send actual velocity (2 bytes – no fractional component)
	3:	send auxiliary status byte (1 byte)
	4:	send home position (4 bytes)
	5:	send device ID, version number (2 bytes) (First byte - Motor controller device ID = 0, Second byte - version number = 20 to 29 (decimal))
	6:	send current position error (2 bytes)
	7:	send number of points in the path buffer (1 byte)
	8:	send digital inputs (2 bytes)
	9:	send analog inputs (2 bytes)
	10, 11:	reserved. Clear to 0
	12:	send watchdog status (2 bytes)
	13:	send motor position and position error (6 bytes)
	14, 15:	reserved. Clear to 0

### Description:

This is a non-permanent version of the *Define Status* command. The status packet returned in response to this command will incorporate the data bytes specified, but subsequent status packets will include only the data bytes previously specified with the *Define Status* command.

## Load Trajectory

Command value: 0x4  
Number of data bytes:  $n = 1-15$   
Command byte: 0xn5

Data bytes:

1. Control byte:

Bit	0:	load position data ( $n = n + 4$ bytes)
	1:	load velocity data ( $n = n + 4$ bytes)
	2:	load acceleration data ( $n = n + 4$ bytes)
	3:	load PWM value ( $n = n + 1$ or 2 bytes)*
	4:	servo mode - 0 = PWM mode, 1 = position servo
	5:	profile mode - 0 = trapezoidal profile, 1 = velocity profile
	6:	in velocity/PWM mode - direction flag 0 = FWD, 1 = REV
	7:	start motion now

PWM value can be 1 or 2 bytes. If only 1 byte is supplied, the most significant byte is set to 0.

### Description:

All motion parameters are set with this command. Setting one of the first four bits in the control byte will require additional data bytes to be sent (as indicated) in the order listed. The position data (range\* +/- 0x7FFFFFFF) is only used as the goal position in trapezoidal profile mode. The velocity data (range 0x00000000 to 0x7FFFFFFF) is used as the goal velocity in velocity profile mode or as the maximum velocity in trapezoidal profile mode. Velocity is given in encoder counts per servo tick, multiplied by 65536. The acceleration data (range 0x00000000 to 0x7FFFFFFF) is used in both trapezoidal and velocity profile mode.

\* While the position may range from -0x7FFFFFFF to +0x7FFFFFFF, the goal position should not differ from the current position by more than 0x7FFFFFFF.



# Logosol Multifunctional Servo Drive LS-231g3SB

Doc # 712231005 / Rev. C, 09/13/2018

Acceleration is given in encoder counts per servo tick per servo tick, multiplied by 65536. The PWM value (range 0x0000 - 0xFFFF), used only when the position servo is not operating, sends a raw PWM value directly to the amplifier. The PWM value is reset to 0 internally on any condition, which automatically disables the position servo.

Bit 4 of the control byte specifies whether the position servo should be used or if the PWM mode should be entered. Bit 5 specifies whether a trapezoidal profile motion should be initiated or if the velocity profiler is used. Trapezoidal profile motions should only be initialized when the motor velocity is 0. (Bit 0 of the status byte indicates when a trapezoidal profile motion has been completed, or in velocity mode, when the command velocity has been reached.) Bit 6 indicates the velocity or PWM direction. If bit 7 is set, the command will be executed immediately. If bit 7 is clear, the command data will be buffered and it will be executed when the *Start Motion* command is issued. For example to load only new position data and acceleration data but not to start the motion yet, the command byte would be 0x94, the control byte would be 0x15, followed by 4 bytes of position data (least significant byte first), followed by 4 bytes of acceleration data.

## Start Motion

Command value: 0x5  
Number of data bytes: 0  
Command byte: 0x05

### Description:

Causes the trajectory information loaded with the most recent Load Trajectory command to execute. This is useful for loading several Drives with trajectory information and then starting them simultaneously with a group command.

## Set Gain

Command value: 0x6  
Number of data bytes: 14  
Command byte: 0xE6  
Data bytes:  
1,2. Position gain KP (0 - 0x7FFF)  
3,4. Velocity gain KD (0 - 0x7FFF)  
5,6. Integral gain KI (0 - 0x7FFF)  
7,8. Integration limit IL (0 - 0x7FFF)  
9. Output limit OL (0 - 0xFF) (typically recommended 0xFA)  
10. Current limit CL (0 - 0xFF) (only odd values)  
11,12. Position error limit EL (0 - 0x3FFF)  
13. Servo rate divisor SR (1 - 0xFF)  
14. Not used

### Description:

Sets all parameters and limits governing the behavior of the position servo. KP, KD, KI and IL are PID filter parameters. OL limits the maximal PWM output value to  $0 < \text{PWM} \leq \text{OL}$  in position servo modes. In PWM mode OL is ignored. CL is used for motor current limitation (refer to *Motor current monitoring* in *Safety Features* for detailed information). Setting CL=0 effectively disables current limiting. The position error limit (EL) will cause the position servo to be disabled should the position error grow beyond the limit. The servo rate divisor sets the servo tick time to be a multiple of 51.2 uSec (19.531) KHz. For example SR=3 gives a servo rate of 6510 Hz. The servo tick rate is also used as the profiling time base, although command processing is always performed at the maximum tick rate.

# Logosol Multifunctional Servo Drive LS-231g3SB

Doc # 712231005 / Rev. C, 09/13/2018

## Stop Motor

Command value: 0x7  
Number of data bytes: 1 or 5  
Command byte: 0x17 or 0x57

Data bytes:

### 1. Stop control byte

Bit 0: Pic\_ae (Power Driver enable)  
1: Turn motor off  
2: Stop abruptly  
3: Stop smoothly  
4: Stop here  
5: Not used. Clear to 0  
6: Not used. Clear to 0  
7: Not used. Clear to 0

### 2-5. Stopping position (only required if bit 4 above is set)

#### Description:

Stops the motor in the specified manner. If bit 0 of the Stop Control Byte is set, Power Driver will be enabled. If bit 0 is cleared Power Driver will be disabled, regardless of the state of the other bits. Pic\_ae also controls the meaning of bit 3 (Power\_on), bit 5 (Limit1 (Reverse)), and bit 6 (Limit 2 (Forward)) of status byte (refer to *Status Bits* and *Safety Features* section in this document). If bit 1 is set, the position servo will be disabled, the PWM output value will be set to 0, and bits 2, 3 and 4 are ignored. If bit 2 is set, the current command velocity and the goal velocity will be set to 0, the position servo will be enabled, and velocity mode will be entered. If the velocity servo was previously disabled, the motor will simply start servoing to its current position. If the motor was previously moving in one of the profiling modes, it will stop moving abruptly and servo to its current position. This stopping mode should only be used as an emergency stop where the motor position needs to be maintained. Setting bit 3 enters a more graceful stop mode - this sets the goal velocity to 0 and enters velocity mode, causing the motor to decelerate to a stop at the current acceleration rate. If bit 4 is set, the motor will move to the specified stopping position abruptly with no profiling. This mode can be used to cause the motor to track a continuous string of command positions. Note that if the stopping position is too far from the current position, a position error will be generated. Only one of the bits 1, 2, 3 or 4 should be set at the same time. The *Stop Motor* command must be issued initially to set Pic\_ae before other motion commands are issued.

## I/O Control

Command value: 0x8  
Number of data bytes: n  
Command byte: 0x18

Data bytes:

Control byte

Bit 0: "Brake out" mode.

If this bit is set to 0 the "Brake out" is controlled according the "Status bits and LEDs" section of this document. If this bit is set to 1 the "Brake out" is controlled by BIT1.

1: Brake out control.

If BIT0 is set to 0 - not used.

If BIT0 is set to 1: BIT1=0 - Brake out=off;  
BIT1=1 - Brake out =on.

2: Not used. Must be set to 0.

3: Not used. Must be set to 0.

4: Not used. Must be set to 0.

5: Not used. Must be set to 0.

6: If this bit is set, the Path Points Buffer counter will be set to the value of the next 2 data bytes (requires 2 data bytes, range 0000h – 7FFFh)

7: Not used. Set to 0.

# Logosol Multifunctional Servo Drive LS-231g3SB

Doc # 712231005 / Rev. C, 09/13/2018

## Description:

Depending on *BIT0* "Brake output" can be controlled by device status (Refer to "Status bits and LEDs" section of this document) or by *BIT1* (Refer to "Brake/Output1" section of this document).

This command with bit 6 set to 1 is used to set the time base for the path points. The path point buffer counter multiplied by the servo tick (51.2 uSec) gives the time between the points. For example if the path point buffer counter is set to 100, the time between the points will be 5.12 mSec (100 x 51.2 uSec).

## **Set Homing Mode**

Command value: 0x9

Number of data bytes: 1

Command byte: 0x19

Data bytes:

### 1. Homing control byte

- |     |    |  |
|-----|----|--|
| Bit | 0: | Capture home position on change of Limit 1 (Reverse)       |
|     | 1: | Capture home position on change of Limit 2 (Forward)       |
|     | 2  | Turn motor off on home                                     |
|     | 3: | Capture home on change of Index                            |
|     | 4: | Stop abruptly on home                                      |
|     | 5: | Stop smoothly on home                                      |
|     | 6: | Capture home position when an excess position error occurs |
|     | 7: | Capture home position when current limiting occurs         |

## Description:

Causes the Drive to monitor the specified conditions and capture the home position when any of the flagged conditions occur. The Home\_In\_Progress bit in the status byte is set when this command is issued and it is then lowered when the home position has been found. Setting one (and only one) of bits 2, 4 or 5 will cause the motor to stop automatically in the specified manner once the home condition has been triggered. This feature can also be used as a safety shutoff.

## **Set Baud Rate**

Command value: 0xA

Number of data bytes: 1

Command byte: 0x1A

Data bytes:

1. Baud rate divisor, BRD

### **sample values:**

9600	BRD = 0x81
19200	BRD = 0x3F
57600	BRD = 0x14
115200	BRD = 0x0A
125000	BRD = 0x27
312500	BRD = 0x0F
625000	BRD = 0x07
1250000	BRD = 0x03

## Description:

Sets the communication baud rate. All drives on the network must have their baud rates changed at the same time; therefore this command should only be issued to a group including all of the controllers on the network. A status packet returned from this command would be at the new baud rate, so typically (unless the host's baud rate can be accurately synchronized) there should be no group leader when this command is issued.

# Logosol Multifunctional Servo Drive LS-231g3SB

Doc # 712231005 / Rev. C, 09/13/2018

## Clear Sticky Bits

Command value: 0xB  
Number of data bytes: 0  
Command byte: 0x0B

### Description:

The overcurrent and position error bits in the status byte and the position wrap and servo timer overrun bits in the auxiliary status byte will stay set unless cleared explicitly with this command.

## Save Current Position as Home

Command value: 0xC  
Number of data bytes: 0  
Command byte: 0x0C

### Description:

Causes the current position to be saved as the home position. This command is typically issued to a group of controllers to cause their current positions to be stored synchronously. The stored positions can then be read individually by reading the home position.

## Add path points

Command value: 0xD  
Number of data bytes:  $n = 0, 2, 4, 6, 8, 10, 12$  or  $14$   
Command byte: 0xnD

### Data bytes:

1, 2: Incremental data for path point 1 ( $n \geq 2$ )  
3, 4: Incremental data for path point 2 ( $n \geq 4$ )  
...  
13, 14: Incremental data for path point 7 ( $n = 0xE$ ) or  
None Starts execution of path point mode ( $n = 0$ )

### Description:

The data format of the points is a 2-byte signed value. The most significant byte is the integer part and the least significant byte is fractional part (1/256 of encoder count). The whole value is added to the desired position each servo tick. The same value is applied Path Points Buffer counter times, thus forming the desired frequency between the path points.

## No Operation

Command value: 0xE  
Number of data bytes: 0  
Command byte: 0x0E  
Data bytes: None

### Description:

The No Operation command does nothing except cause a status packet with the currently defined status data to be returned.

# Logosol Multifunctional Servo Drive LS-231g3SB

Doc # 712231005 / Rev. C, 09/13/2018

## Extended commands

Command value: 0xE  
Number of data bytes: 1 to n  
Command byte: 0x1E to 0xnE  
Data bytes:  
1: sub command code  
2 to n: sub-command specific data

**Sub-command 0x00** Stop on limit switches.

Data bytes:

1: control byte for limit 1 (Reverse)  
2: control bite for limit 2 (Forward)

*Limit switch control bytes bit description:*

Bit 0 servo in one direction  
1 turn motor off  
2 stop abruptly  
3 stop smoothly  
4 to 7 not used

### Description

Setting one of bits 0 to 3 enables Stop on limits function and specifies how to stop the motor. If bit 0 is set, the position servo will be enabled in the direction of the limit only. If bit 1 is set, the position servo will be disabled, the PWM output value will be set to 0, and bits 2 and 3 are ignored. If bit 2 is set, the motor will simply start holding its current position. Setting bit 3 enters a more graceful stop mode – the controller sets the goal velocity to 0 and enters velocity mode, causing the motor to decelerate to a stop at the current acceleration rate.

Clearing bits 0 to 3 disables Stop on limits function.

This function is disabled by default.

**Sub-command 0x01** Read hall sensors and initialize the angle.

### Description

This command makes the controller to read the hall sensors state and to calculate the initial angle. This angle will be overwritten when the first index comes.

**Sub-command 0x02** repeat the last answer.

### Description

This command makes the controller to send the last sent answer again.

**Sub-command 0x04** Enable / Disable hardware synchronization mode.

Data byte 1 0 – Disable; 1 – Enable.

### Description

This command enables / disables hardware synchronization mode. When enabled, several LS-231g3SB drives connected to each other synchronize their servo ticks. This eliminates any differences in the actual velocity, which otherwise can be caused by the slightly different oscillators.

# Logosol Multifunctional Servo Drive LS-231g3SB

Doc # 712231005 / Rev. C, 09/13/2018

**Sub-command 0x05** Set watchdog mode.

**Data byte 1** mode: 0 – watchdog off, 1 – disable the amplifier, 2 – stop smoothly and disable the amplifier, 3 – stop smoothly.

**Data byte 2** watchdog timeout in multiples of 8192 microseconds.

## Description

This command sets the watchdog mode and timeout. The watchdog is refreshed by any command sent to the driver. Upon expiration, the watchdog can disable the amplifier, stop smoothly and disable the amplifier, or stop smoothly and keep the amplifier enabled. After the watchdog expires, the drive stops executing any motion commands. This command should be sent again to reset the watchdog.

The watchdog status can be obtained using Read Status or Define Status commands with bit 12 set to 1. If the watchdog is not activated, the status will be 65535 (0xFFFF). If the watchdog has expired, the status will be 0. Any other value means that the watchdog is working and represents the remaining time before the watchdog expires in multiples of 8192 microseconds.

**Sub-command 0x10** Set motor error limit.

**Data bytes 1 and 2** motor error limit.

## Description

In dual loop mode, after power up, the motor error limit is set to the same value as the master error limit. Set gain commands also sets the motor error limit to the same value as the master error limit. This command can be used to set the motor error limit.

## **Hard Reset**

**Command value:** 0xF

**Number of data bytes:** 0

**Command byte:** 0x0F

## Description:

Resets the control module to its power-up state. No status will be returned. Typically, this command is issued to all the modules on the network, although if the baud rate is set at the default, it is possible to reset and re-initialize the addresses of a contiguous sub-chain of modules.

Hard reset command sent at address 0xFF resets the controller even if its group address is different than 0xFF.

# Logosol Multifunctional Servo Drive LS-231g3SB

Doc # 712231005 / Rev. C, 09/13/2018

## **STATUS BYTE AND AUXILIARY STATUS BYTE DEFINITIONS**

### **Status Byte**

<u>Bit</u>	<u>Name</u>	<u>Definition</u>
0	Move_done	Clear when in the middle of a trapezoidal profile move or in velocity mode, when accelerating from one velocity to the next. This bit is set otherwise, including while the position servo is disabled
1	Cksum_error	Set if there was a checksum error in the just received command packet
2	Current_limit	Set if current limiting has exceeded. Must be cleared by user with <i>Clear Sticky Bits</i> command
3	Power_on/diag. bit	Refer to <i>LS-231g3SB Diagnostic and I/O</i> section in this document
4	Pos_error	Set if the position error has exceeded the position error limit. It is also set whenever the position servo is disabled (Power_on=0). Must be cleared by user with <i>Clear Sticky Bits</i> command
5	Home source/ diag. bit	Home source or diagnostic bit (refer <i>LS-231g3SB Diagnostic and I/O</i> section in this document).
6	Limit2/diag. bit	Forward Limit or diagnostic bit (refer to <i>LS-231g3SB Diagnostic and I/O</i> section in this document).
7	Home_in_progress	Set while searching for a home position. Reset to zero once the home position has been captured

### **Auxiliary Status Byte**

<u>Bit</u>	<u>Name</u>	<u>Definition</u>
0	Index/diag. bit	Compliment of the value of the index input or diagnostic bit (refer to <i>LS-231g3SB Diagnostic and I/O</i> section in this document).
1	Pos_wrap	Set if the 32-bit position counter wraps around. Must be cleared with the <i>Clear Sticky Bits</i> command
2	Servo_on	Set if the position servo is enabled, clear otherwise
3	Accel_done	Set when the initial acceleration phase of a trapezoidal profile move is completed. Cleared when the next move is started
4	Slew_done	Set when the slew portion of a trapezoidal profile move is complete. Cleared when the next move is started
5	Servo_overrun	At the highest baud rate and servo rate, certain combinations of calculations may cause the servo, profiling, and command processing to take longer than 51.2 uSec, in which case, this bit will be set. This is typically not serious, only periodically introducing a small fraction of a millisecond delay to the servo tick time. Cleared with the <i>Clear Sticky Bits</i> command
6	Path mode	Set when the drive is currently executing a path. Cleared when buffer is emptied or Stop Motor or Load Trajectory command is sent.

# Logosol Multifunctional Servo Drive LS-231g3SB

Doc # 712231005 / Rev. C, 09/13/2018

## INITIALIZING PROCEDURE AND PROGRAMMING EXAMPLES FOR SERVO DRIVES

To ensure a proper operation of all Servo drives connected to the network, the following initializing steps should be executed:

1. Reset all modules with *Hard Reset* command.
2. Set the addresses for all connected drives.
3. Set the individual gains (KP, KD, KI, IL, OL, CL, EL, SR and DB). Minimal requirements are: KP  $\neq$  0, EL  $\neq$  0 and SR  $\neq$  0.
4. Use *Load trajectory* command to set the target position, velocity acceleration with start motion now in trapezoidal mode. Minimal requirements are acceleration  $\neq$  0 and target position = 0. This command does not start any motion. It is necessary to initialize internal registers of the module.
5. Close the servo loop by using *Stop Motor* command (Pic\_ae=1 and Stop abruptly=1).

## Understanding the Serial Communication with Servo drives

The Serial Communication with Servo drives is strictly master-slave and matches repeatedly two elements:

- Sending a command to the specified drive's address;
- Receiving answer to the sent command – Status Byte(s).

**Note:** During the communication all bytes are sent with LSB first.

## Commands

There are 16 commands managing Servo drives (refer to Command Description). Each command as shown in the following two tables includes header, address, command, data bytes and one checksum byte. Checksum does not include header byte.

### Structure of Read Status command

Byte 1	Byte 2	Byte 3		Byte 4	Byte 5
Header	Address (Individual or Group)	Command Code		Data Byte	CheckSum = Byte 2 + Byte 3 + Data Byte
		High 4 bits No. of data bytes	Low 4 bits command code		
AA	01	1	3	01	15

## Examples

Cmd. Bytes	Byte 1	Byte 2	Byte 3	Byte 4 – N	Byte N+1
Command	Header	Address	Cmd. Code	Data Byte(s)	Checksum
Reset position	AA	01	0 0		01
Define status	AA	05	1 2	05	1C
Set address	AA	01	2 1	07 FF	21
Load trajectory	AA	01	5 4	91 00 28 00 00	0E
Set gain	AA	01	E 6	64 00 00 04 00 00 00 00 FF 00 00 08 01 00	57

## Status Data

The structure of the returned status information depends on *Define Status* or *Read Status* commands (refer to Command Description). By default only the Status byte and Checksum are returned to the host.

## Examples

Byte 1	Optional Bytes 0-16	CheckSum
Status Byte	Additional Status Bytes as position, velocity, home position, A/D auxiliary byte, version and position error.	CheckSum = Byte 1+ Optional Bytes
09	no additional status bytes requested	09
09	00 28 00 00 – four additional status bytes	31



# Logosol Multifunctional Servo Drive LS-231g3SB

Doc # 712231005 / Rev. C, 09/13/2018

## Addressing

Each drive in the daisy-chained network has two addresses:

- Individual - for individual control of each drive. Its range is from 01h to 7Fh.
- Group - for simultaneous control of all group members by sending a single command to their group address. It is in the range of 80h to FFh.

Both these addresses have to be set during the initialization process.

The group may have Group leader responsible to send status data. Its address is:

Group leader address = Group address - 80h.

If there is no group leader - no status data will be send after a group command.

*Set Baud Rate* command must be sent only as a group command with no group leader, otherwise communication problems may occur.

## Set Address command format

Byte 1	Byte 2	Byte 3	Byte 4	Byte 5	Byte 6
Header	Preset Address	Command code	Individual Address	Group Address	Checksum
AA	00	21	01	FF	21

## Setting the Addresses

After power-up and *Hard Reset* command all drives have their address set to 00h and only the first drive (starting from the host) has its communication enabled. Consecutive *Set Address* commands are sent to address 00h until all drives are addressed. This procedure can be executed once after *Hard Reset*. The table below shows the steps to address 3-drives network.

## Example of sequential addressing for three Servo drives

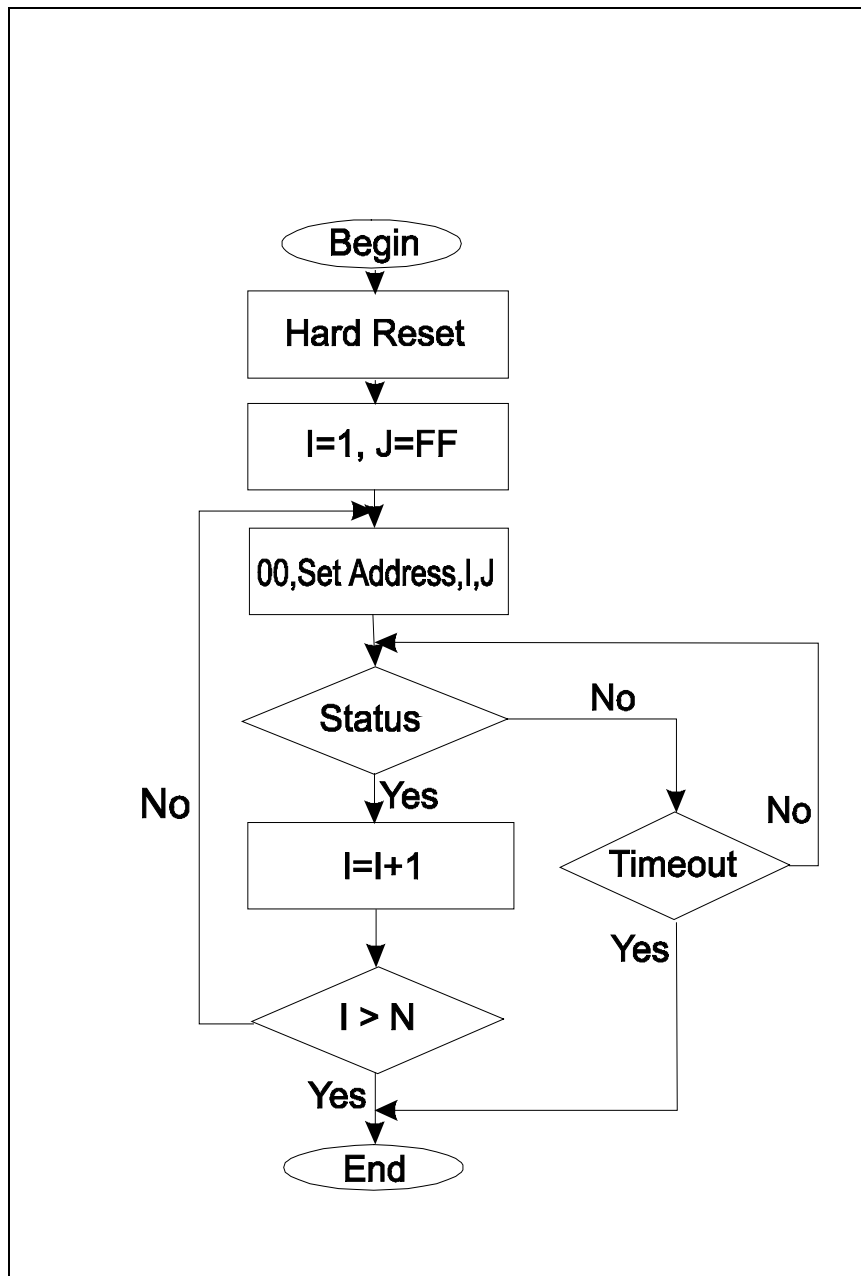
Step	Command	Set address Hexadecimal Code	Drive 1		Drive 2		Drive 3	
			Individual address	Group address	Individual address	Group address	Individual address	Group address
0	Power-up							
1	Hard Reset	AA FF 0F 0E	address=00 communication <i>enabled</i>		address=00 communication <i>disabled</i>		address=00 communication <i>disabled</i>	
2	Set Address Drive1 = 01	AA 00 21 01 FF 21	01	FF	address=00 communication <i>enabled</i>		address=00 communication <i>disabled</i>	
3	Set Address Drive2 = 02	AA 00 21 02 FF 22	01	FF	02	FF	address=00 communication <i>enabled</i>	
4	Set Address Drive3 = 03	AA 00 21 03 FF 23	01	FF	02	FF	03	FF

**Note:** Before start addressing *Hard Reset* command must be issued.

# Logosol Multifunctional Servo Drive LS-231g3SB

Doc # 712231005 / Rev. C, 09/13/2018

The flowchart shows the addressing procedure of N drives network. There is no group leader and the group address is FF.



*I* - Individual Address; *J* - Group Address = FF;

*Status* - Status Data sent to the Host; *Timeout* - Greater than one servo cycle.

# Logosol Multifunctional Servo Drive LS-231g3SB

Doc # 712231005 / Rev. C, 09/13/2018

## Examples of Managing Two Servo Drives

- # 1 – Resets all modules with group command.
- # 2 and # 3 - Set the addresses of drives 1 and 2.
- # 4 and # 6 - Set PID parameters of drives 1 and 2.
- # 6 and # 7 - Starts motion in trapezoidal mode with target position=0, velocity=0, acceleration=1 and PWM=0.
- # 8 and # 9 - Close servo loops of drives 1 and 2. Initialization is complete at this point.
- # 10 and # 10 - Load trajectories (positions, velocities and accelerations) for drives 1 and 2.
- # 12 and # 13 - Load and execute new trajectory for drive 1.
- # 14 and # 15 - Read additional status bytes from drives 1 and 2.
- # 16, # 17 and #18 - Load new trajectories for drives 1 and 2 and execute them with one command sent to the drives' group address.

## Examples

#	Hexadecimal code of command	Comments
1	AA FF 0F 0E	<i>Hard Reset</i>
2	AA 00 21 01 FF 21	<i>Set Address 01h for drive 1. Group address=FFh.</i>
3	AA 00 21 02 FF 22	<i>Set Address 02h for drive 2. Group address=FFh.</i>
4	AA 01 E6 64 00 00 04 00 00 00 00 FF 00 00 08 01 00 57	<i>Set Gains of drive 1 – defines PID parameters: KP=64h, KD=400h, KI=00h, IL=00h, OL=FFh, CL=00h, EL=800h, SR=01h, DC=00h.</i>
5	AA 02 E6 64 00 00 04 00 00 00 00 FF 00 00 08 01 00 58	<i>Set Gains of drive 2 – defines PID parameters: KP=64h, KD=400h, KI=00h, IL=00h, OL=FFh, CL=00h, EL=800h, SR=01h, DC=00h.</i>
6	AA 01 E4 9F 00 00 00 00 00 00 00 00 01 00 00 00 00 85	<i>Load trajectory for drive 1 – target position=0, velocity=0, acceleration=1, PWM=0 and start motion now</i>
7	AA 02 E4 9F 00 00 00 00 00 00 00 00 01 00 00 00 00 86	<i>Load trajectory for drive 2 – target position=0, velocity=0, acceleration=1, PWM=0 and start motion now</i>
8	AA 01 17 05 1D	<i>Stop Motor - closes servo loop of drive 1 with Power Driver enable and Stop Abruptly in Command byte.</i>
9	AA 02 17 05 1E	<i>Stop Motor - closes servo loop of drive 2 with Power Driver enable and Stop Abruptly in Command byte.</i>
10	AA 01 E4 9F 00 00 00 00 00 00 80 01 00 64 00 00 00 00 69	<i>Load Trajectory of drive 1 with Pos=0000h, Vel=18000h, Acc=6400h, PWM=00h, servo mode=1.</i>
11	AA 02 E4 9F 00 00 00 00 00 00 80 01 00 64 00 00 00 00 6A	<i>Load Trajectory of drive 2 with Pos=0000h, Vel=18000h, Acc=6400h, PWM=00h, servo mode=1.</i>
12	AA 01 54 11 00 28 00 00 8E	<i>Load Trajectory of drive 1 with new position=2800h.</i>
13	AA 01 05 06	<i>Start Motion - executes previously loaded trajectory.</i>
14	AA 01 13 05 19	<i>Read Status from drive 1 (plus position and velocity).</i>
15	AA 02 13 05 1A	<i>Read Status from drive 2 (plus position and velocity).</i>
16	AA 01 54 11 20 4E 00 00 D4	<i>Load Trajectory of drive 1 with new position=4E20h.</i>
17	AA 02 54 11 E0 B1 FF FF F6	<i>Load Trajectory of drive 2 with new position=FFFFB1E0h (-4E20h).</i>
18	AA FF 05 04	<i>Start Motion – executes previously loaded trajectories. The command is sent to the drives' group address FFh.</i>

# Logosol Multifunctional Servo Drive LS-231g3SB

Doc # 712231005 / Rev. C, 09/13/2018

## Procedure Initialize

AA FF 0F 0E	Hard reset
AA 00 21 01 FF 21	Set address
AA 00 21 02 FF 22	Search for more modules until no response received
AA 01 13 20 34	Read Device ID and Version number
AA 01 13 FF 13	Read all status data
AA 01 E6 64 00 00 04 00 00 00 00 FF 00 00 08 01 00 57	Set Gain parameters
AA 01 E4 9F 00 00 00 00 00 00 00 00 01 00 00 00 00 85	Set Trajectory parameters
AA 01 17 05 1D	Close servo loop

## Procedure FindHomePosition

AA 01 E6 C8 00 20 03 46 00 28 00 FF 00 40 1F 01 00 9F	Set gain parameters: KP=200, KD=800, KI=70, IL=40, Output limit=255, current limit =0, Position error limit=8000, Servo rate divisor=1 amplifier deadband compensation=0
AA 01 17 09 21	Close the servo loop (Stop smoothly and amplifier enable)
AA 01 94 36 25 06 01 00 22 00 00 00 19	Load trajectory: Velocity mode, Forward direction, Velocity=1 revolution per second (67109 programmed velocity for 5000 line encoder), Acceleration = 10 revolutions per second <sup>2</sup> (34 programmed acceleration for 5000 line encoder)
AA 01 19 12 2C	Set home mode - capture home position on change of Limit 1 and stop abruptly
AA 01 05 06	Start motion
wait while home_in_progress bit=1	Home position is found on change of Limit 2
AA 01 19 18 32	Set home mode - capture home position on change of Index and stop abruptly
AA 01 94 77 25 06 01 00 58 01 00 00 91	Load trajectory: Velocity mode, Reverse direction
AA 01 05 06	Start motion
wait while home_in_progress bit=1	Home position is found on change of Index

Calculation of programmed velocity and acceleration for servo rate divisor = 1:

Vel = (encoder counts per revolution) x (number of revolutions per second) x 3.3554432

Acc = (encoder counts per revolution) x (number of revolutions per second<sup>2</sup>) x 0.00017179869

For this example (5000 lines encoder – 20000 encoder counts per revolution):

Vel = 20000 x 1 x 3.3554432 = 67109 = 00010625h

Acc = 20000 x 10 x 0.00017179869 = 34 = 00000022h