

**Features:**

Power supply for Logosol’s servo amplifiers, intelligent drives, stand-alone controllers and user devices.

Two independent power sources:

I/O POWER - 24V / 2.5A and

MOTOR POWER:

- 96V / 6A LS-696S (obsolete)
- 80V / 8A LS-880S
- 60V / 10A LS-1060S
- 48V / 11A LS-1148S (obsolete)
- 24V / 23A LS-2324S (obsolete)
- 120V / 5A LS-5120S

115 VAC or 230 VAC 50/60Hz operation with standard IEC power input

3kV primary to secondary isolation

Two terminal screws per power output for easy connection with multiple devices

Emergency stop dependent MOTOR POWER

Emergency stop activated output

Regenerative shunt regulator



**Description:**

Complete power supply solution for most single and multi axis applications.

They provide two unregulated power sources, specially designed to be used with Logosol motion control components and other related devices.

The power supplies are emergency stop controlled devices, which provides high safety level for all components connected to its MOTOR POWER source.

Shunt regulator has two functions:

- Protection against overvoltage, generated by the motor;
- Rapid shut down of the MOTOR POWER when the power supply is turned off.

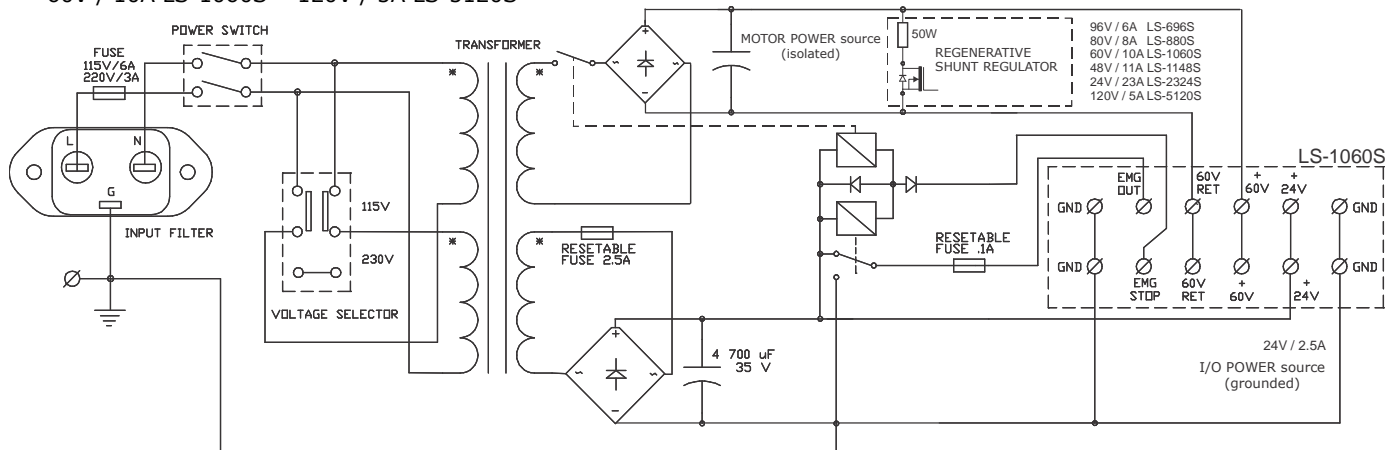
For high peak stability the MOTOR POWER supply includes large internal capacitance

**Functional Diagram:**

MOTOR POWER source (isolated):

- 96V / 6A LS-696S    48V / 11A LS-1148S
- 80V / 8A LS-880S    24V / 23A LS-2324S
- 60V / 10A LS-1060S    120V / 5A LS-5120S

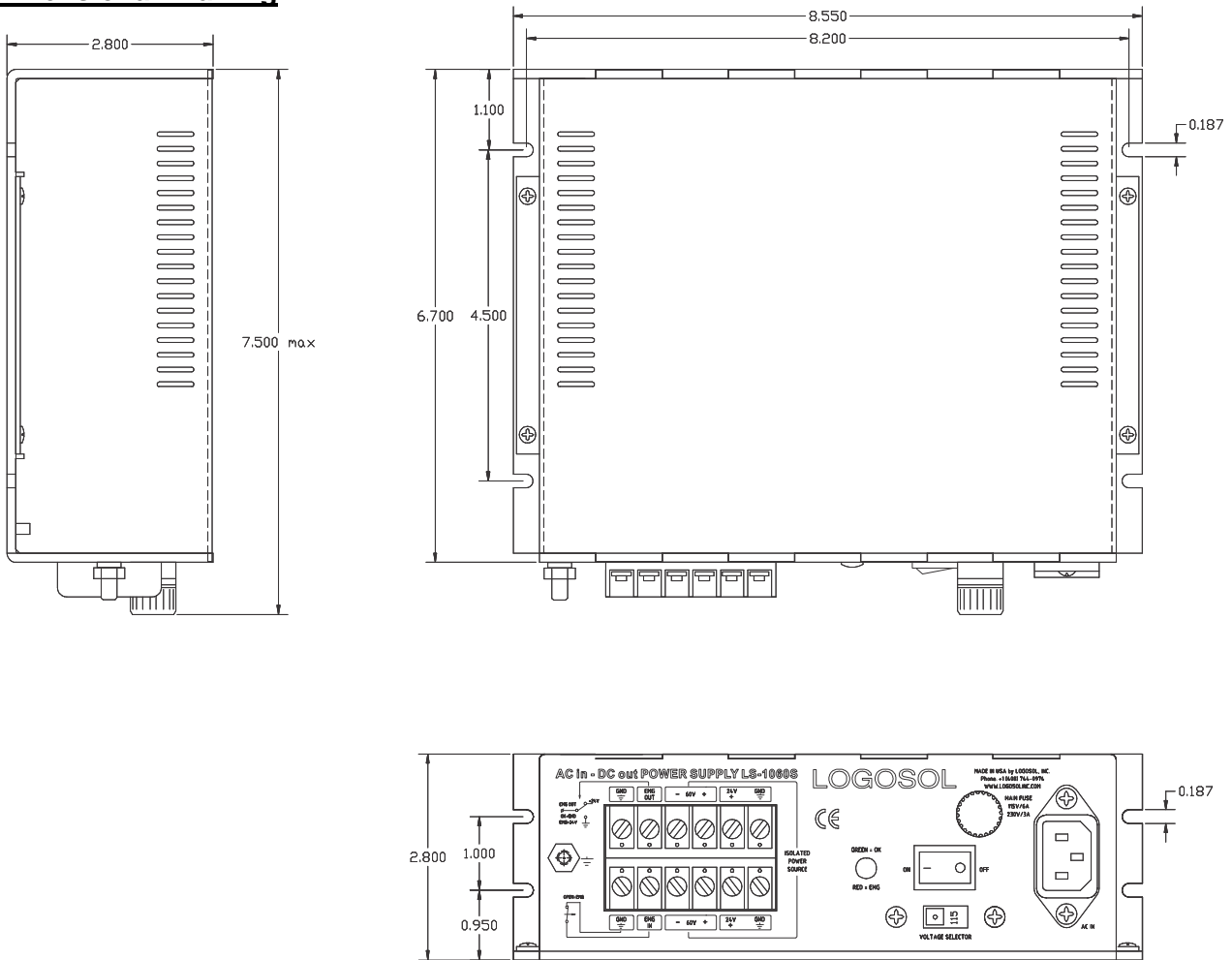
I/O POWER source — +24V & GND



**Ordering information:**

TYPE	LS-696S	LS-880S	LS-1060S	LS-1148S	LS-2324S	LS-5120S
PART NO	921696002	921088001	921106004	921148002	921232402	921512002

**Dimensional Drawing:**



**General Specifications:**

	LS-696S	LS-880S	LS-1060S	LS-1148S	LS-2324S	LS-5120S
Line voltage			100±120V~60Hz;		200±240V~50Hz	
MOTOR POWER voltage (isolated)	96V	80V	60V	48V	24V	120V
	-10%, +15%	-10%, +15%	-10%, +15%	-10%, +15%	-10%, +15%	-10%, +15%
MOTOR POWER output current*	6A	8A	10A	11A	23A	5A
	15A peak (5 seconds)	20A peak (5 seconds)	25A peak (5 seconds)	27A peak (5 seconds)	35A peak (5 seconds)	10A peak (5 seconds)
I/O POWER voltage (grounded)	24V, -10% +15%					
I/O POWER Output current	2.5A, 4A peak (3 seconds)					
Maximum rated power*	600VA					
MOTOR POWER isolation	200 VDC					
Ripple Voltage*	6% max					
Ambient temperature	32±150°F / 0±65°C					
Emergency stop input current	40mA ± 6mA					
Emergency output voltage	HIGH = I/O POWER (24V) LOW = GND (0V)					
Emergency output current	150mA max (fused)					
Weight	9 lbs / 4.1 kg					

\* Rated at 50% motor duty cycle

**Sample application:**

