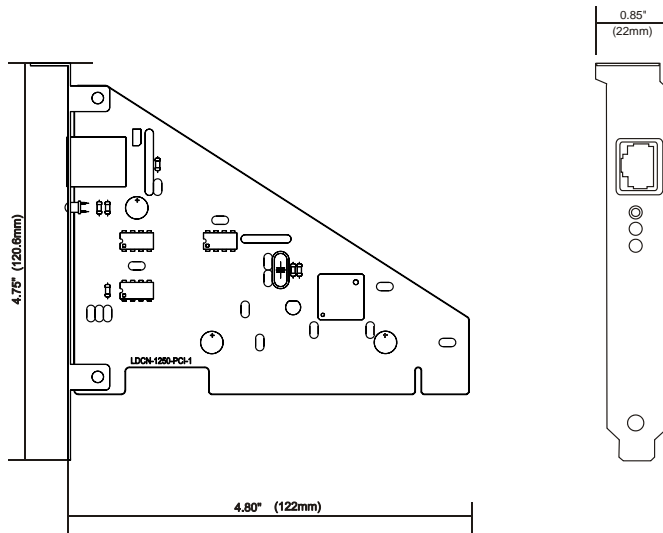


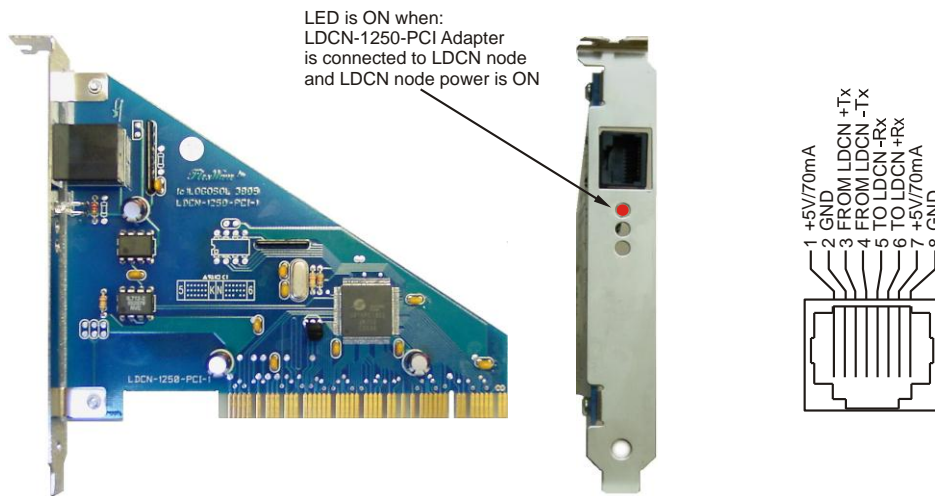
Logosol LDCN-1250-PCI Adapter

Doc. # 711830003 / Rev. B, 02/25/2014

DIMENSIONAL DRAWING



PINOUT



INTERFACE

LDCN network to PCI serial port isolated adapter. Cable length between LDCN-1250-PCI adapter and the first node should not exceed 100ft or 30m.

ORDERING GUIDE

| PART NUMBER | MODEL | DESCRIPTION |
|-------------|------------------|-----------------------------------|
| 921830003 | LDCN-1250-PCI-10 | LDCN PCI adapter with 10 ft cable |
| 921830005 | LDCN-1250-PCI-8 | LDCN PCI adapter with 8 ft cable |

Logosol LDCN-1250-PCI Adapter

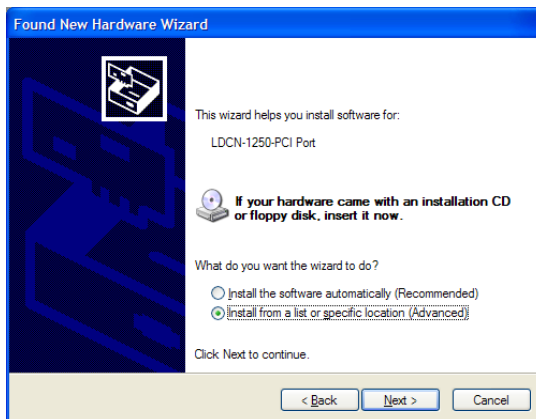
Doc. # 711830003 / Rev. B, 02/25/2014

INSTALLATION

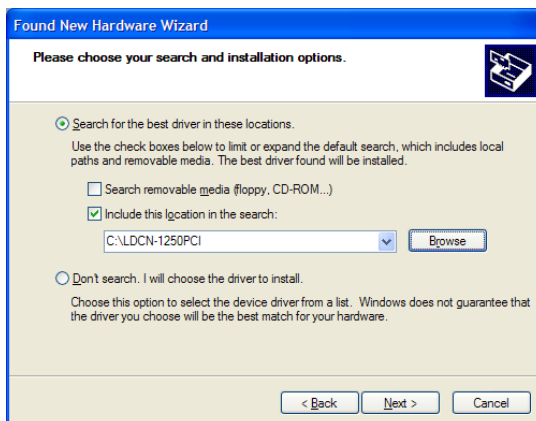
- Download software drivers from: <http://logosolinc.com/files/downloads/Software/LDCN-1250PCIdriver.zip>
- Unzip files in C:\LDCN-1250PCI
- Turn OFF the computer and install LDCN-1250-PCI adapter
- Turn ON the computer. The following screen will appear:



- Select "No, not this time" and click Next. Select "Install from a list or specific location (Advanced)"



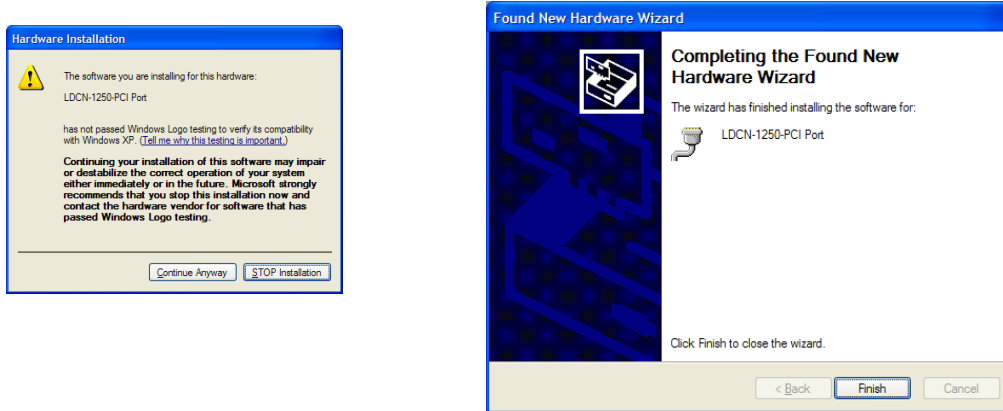
- Select the unzipped files directory.



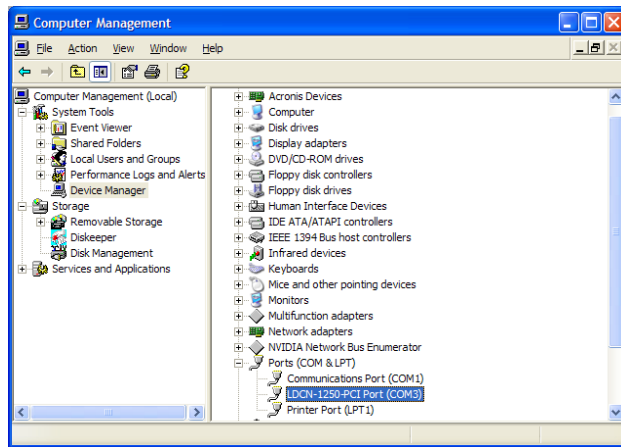
Logosol LDCN-1250-PCI Adapter

Doc. # 711830003 / Rev. B, 02/25/2014

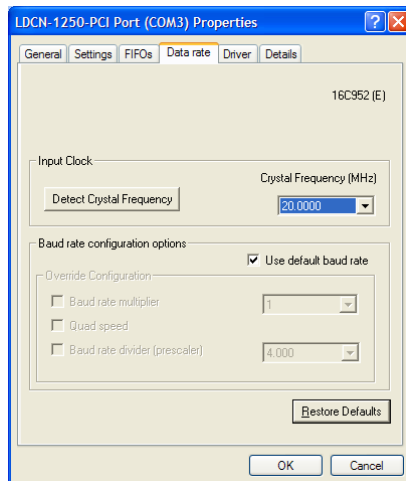
- g. Select “Continue Anyway” from the next screen. After driver installation is completed click “Finish”



- h. Make a right click on “My Computer” icon and select “Manage”. Click on LDCN-1250-PCI (COMx) Port



- i. From LDCN-1250-PCI (COMx) Properties select “Data rate” and “Crystal Frequency (MHz)”=20.0000



- j. Write down the port number. The same port number should be set in your application. Click “OK” and close “Computer Management” window.